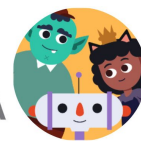


# Maximizing impact: Data-informed remediation with the ARG/DERG for 3-5 teachers

Amplify CKLA  
FLORIDA



**Note:** To get the most benefit from this session, educators should bring class data from a recent benchmark/unit assessment, or class data from a Universal Screener/diagnostic assessment.

| Agenda  | Objectives   |
|---|--|
| <b>Welcome</b>  | <b>By the end of this session, participants will be able to:</b> <ul style="list-style-type: none"><li>• Explain when and how remediation takes place in Amplify CKLA.</li><li>• Identify the components of the <i>Assessment and Remediation Guide</i> (ARG) or <i>Decoding and Encoding Remediation Guide</i> (DERG), and navigate the resource with ease.</li><li>• Develop instructional plans for remediation in small groups using the <i>Assessment and Remediation Guide</i> (ARG) or <i>Decoding and Encoding Remediation Guide</i> (DERG).</li></ul> |
| <b>Remediation in Amplify CKLA</b> <ul style="list-style-type: none"><li>• What does it look like?</li><li>• Science of reading</li><li>• Using data to inform instruction</li></ul>  |  |
| <b>The ARG and DERG</b> <ul style="list-style-type: none"><li>• Components of the ARG/DERG<ul style="list-style-type: none"><li>◦ Introduction to components</li><li>◦ Time to explore and locate components</li><li>◦ Available lesson materials</li></ul></li><li>• Navigating the ARG/DERG<ul style="list-style-type: none"><li>◦ Navigation scavenger hunt</li></ul></li></ul>      |  |
| <b>Plan data-informed instruction</b> <ul style="list-style-type: none"><li>• Walk through of creating a plan</li><li>• Work session 1: Participants plan a lesson using the ARG/DERG</li><li>• Work session 2: Participant choice<ul style="list-style-type: none"><li>◦ Plan another lesson</li><li>◦ Practice a component</li><li>◦ Explore the ARG/DERG further</li></ul></li></ul> |  |
| <b>Closing</b>  |  |