

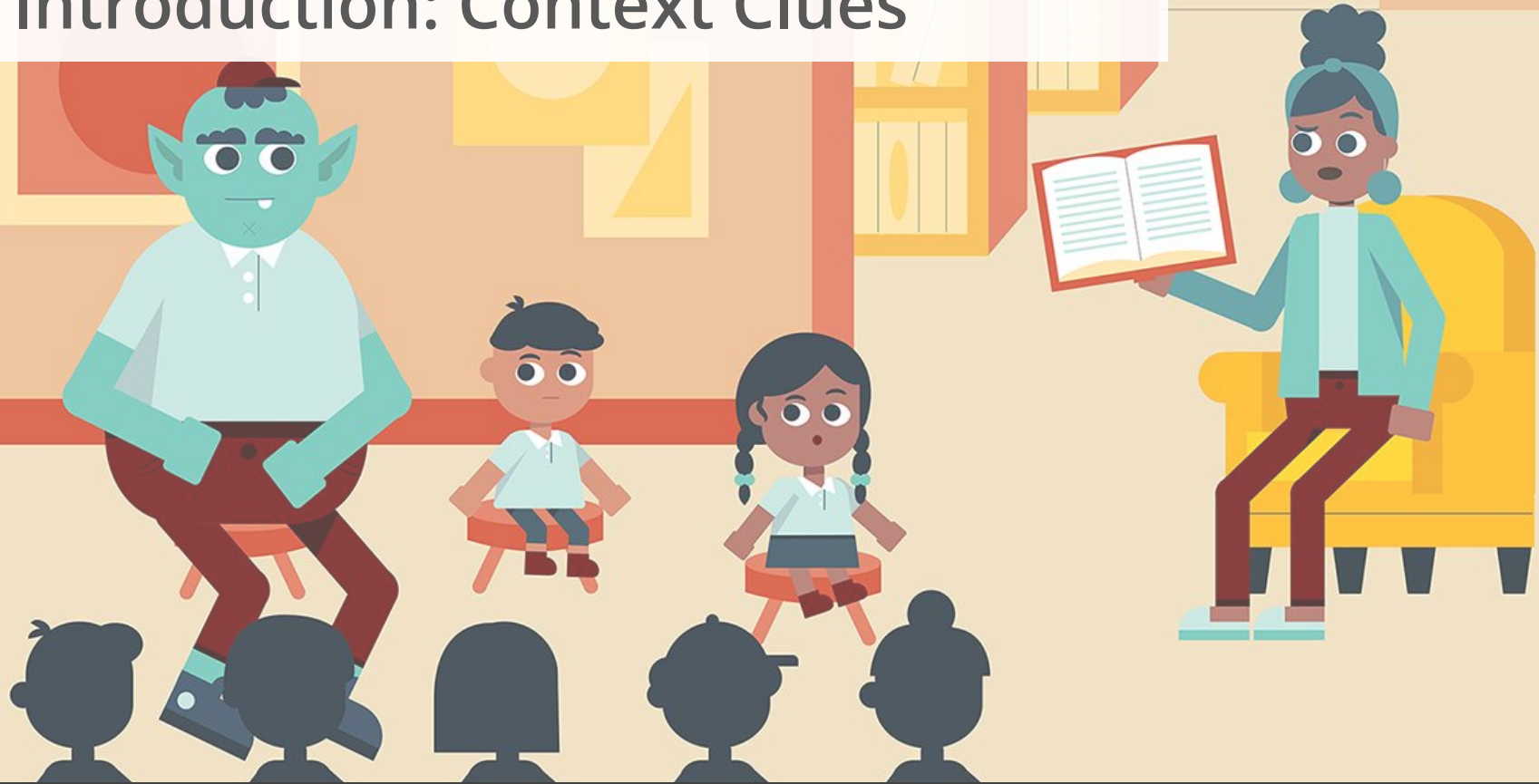
# Vocabulary

Grade 2 Domain 3: The Ancient Greek Civilization



## Context Clues

# Introduction: Context Clues



**Context clues** are the other words in a sentence that help us determine the meaning of an unknown word. Images are another example of context clues.

Let's read this sentence from our domain on the Ancient Greek civilization:

After each emergency, each city-state would go back to **independently** minding its own business.

To determine the meaning of the word **independently**, we can look at other words in the sentence. These are context clues.

Let's read it again:

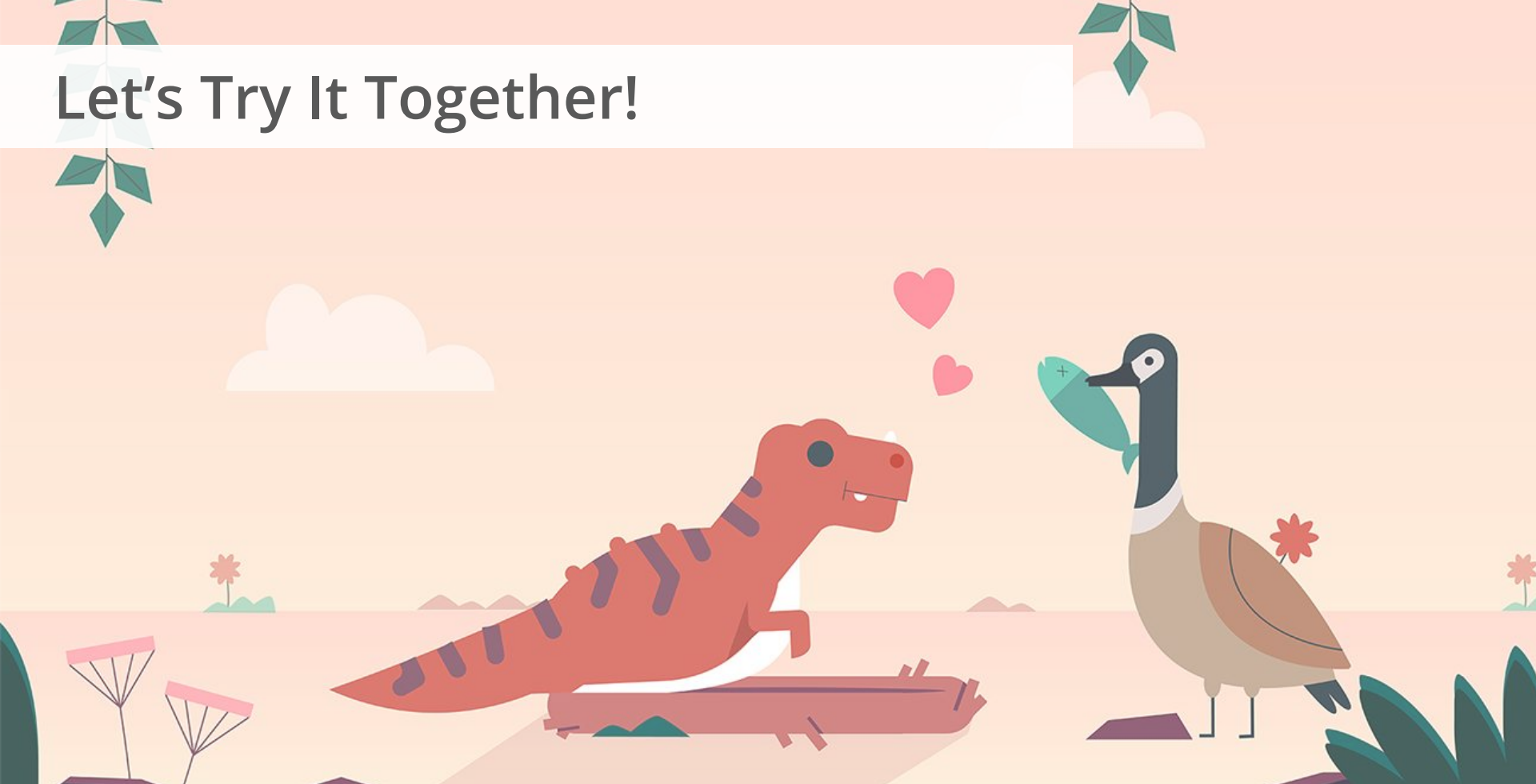
After each emergency, each city-state would go back to **independently** *minding its own business*.

You are probably familiar with the phrase *minding its own business*.

Based on our understanding of the phrase *minding its own business*, we can determine that **independently** means acting alone.



Let's Try It Together!



Let's read this sentence from the domain:

Every day began **delightfully** on Mount Olympus,  
for it was the home of the gods.

To determine the meaning of the word **delightfully**, we can look at other words in the sentence. These are context clues.

Now, let's read it again:

Every day began **delightfully** on Mount Olympus,  
for it was the home of the gods.

You are probably familiar with the phrases *every day* and *home of the gods*.

But we still don't have enough information to determine the meaning of **delightfully**.

In this case, we keep reading to see if we can get the additional information we need.

Now, let's read the following sentence:

Sometimes the gods enjoyed roaming on Earth, which is where the gods could be found at this moment.

Based on your understanding of the word *enjoyed*, do you think **delightfully** describes something done in a good way or in a bad way?

Put your thumb up if you think **delightfully** describes something done in a *happy way*.

Put your thumb down if you think **delightfully** describes something done in a *mad way*.

Turn to a partner and discuss the context clues you used to determine that **delightfully** describes something done in a happy way.



Now you try one with a partner. Read the sentence:

Instead, all Spartan men served **permanently** in the Spartan army and lived in army camps.

Based on context clues, do you think the word **permanently** means:

for all time

for a short time

If you need more information to determine the meaning of **permanently**, go back and read the previous sentence:

Occasionally, they saw his father whenever he visited home, for fathers did not live with their families in Sparta.

Did you remember the steps?

1. Look at the other words in the sentence. If necessary, read sentences before or after the sentence.
2. Use your understanding of familiar words and phrases.

*occasionally visited home*

*did not live with their families*

3. Determine the meaning of the unknown word.  
for all time

Now try one by yourself!



Read the sentence:

Poseidon said, "I can bless the safety of your fishermen while they ride upon my waves, and see to it that their ships move **swiftly** and smoothly to distant shores and back home again."

Look for context clues to help determine the meaning of the word **swiftly**.



Raise one finger if you think **swiftly** means *very slow*.

Raise five fingers if you think **swiftly** means *very fast*.

# Answer



**Swiftly** means very fast.  
The context clues in this sentence are  
*safety of your fishermen* and  
*back home again*.