



Seth

Reader

Kindergarten

Skills 7

Kindergarten

Skills 7

Seth

Reader

This file is provided exclusively for use by students and teachers for whom the corresponding materials have been purchased or licensed from Amplify. Any other distribution or reproduction of these materials is forbidden without written permission from Amplify.

ISBN 978-1-68391-013-8

© 2015 The Core Knowledge Foundation and its licensors
www.coreknowledge.org

All Rights Reserved.

Core Knowledge Language Arts and CKLA are trademarks of the Core Knowledge Foundation.

Trademarks and trade names are shown in this book strictly for illustrative and educational purposes and are the property of their respective owners. References herein should not be regarded as affecting the validity of said trademarks and trade names.

Table of Contents

Seth

Skills 7 Reader

Seth	2
Seth’s Mom	8
Seth’s Dad	18
Sal’s Fish Shop	26
Lunch	32
Seth’s Finch	36
Pausing Point (Stories for Assessment and Enrichment)	
Lost Finch	40
Seth’s Sled	44
Meg’s Tots	48
Hash and Milk	54



Seth

This is Seth Smith.

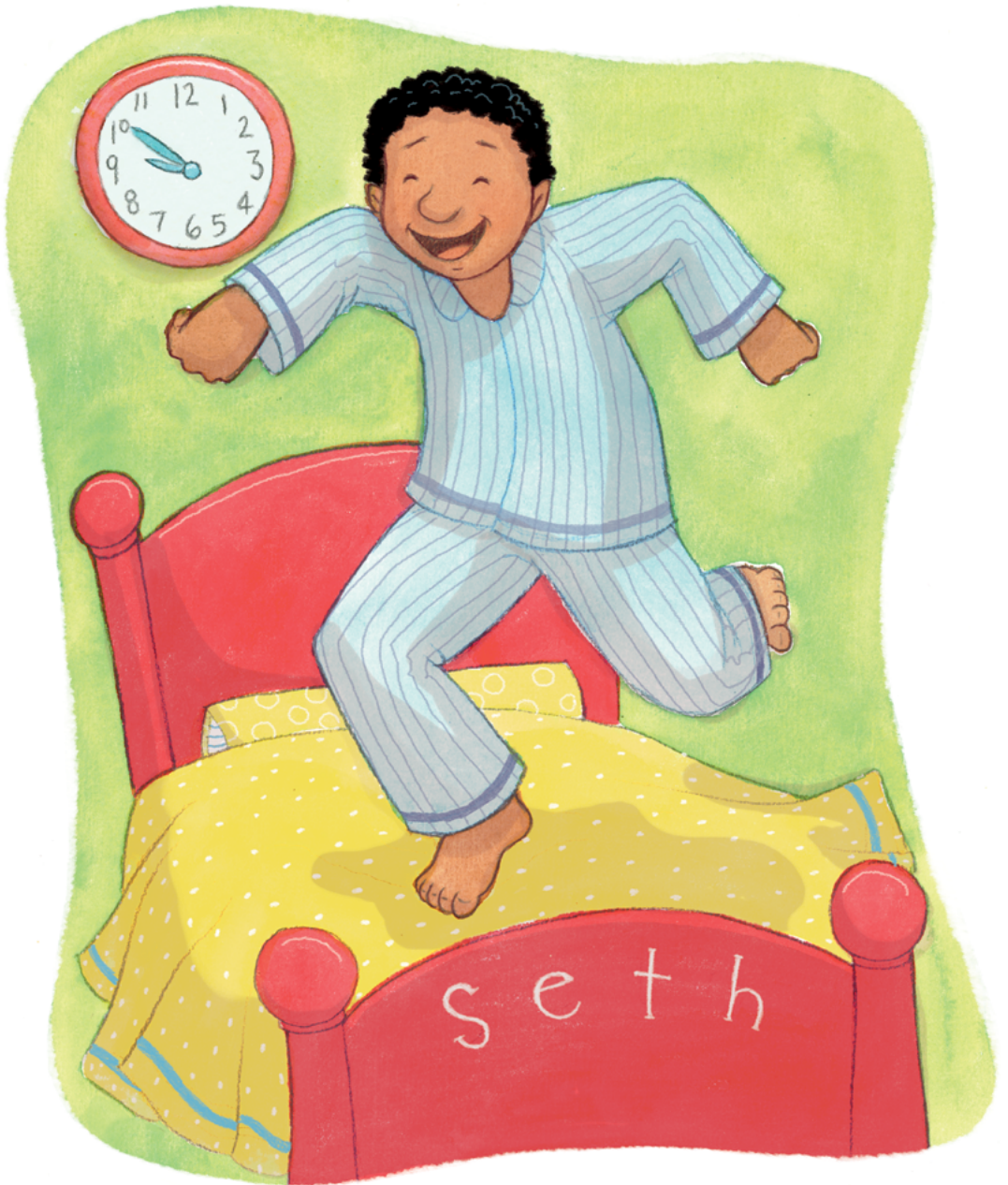
Seth is ten.



Seth must get in bed at ten.

Seth can jump on his bed, but not past ten.

Seth can stomp and romp and stand on his hands, but not past ten.



Seth's dad gets mad if
Seth is not in bed at ten.



Seth's Mom

This is Pat.

Pat is Seth's mom.



Pat can fix **things**.



Pat can scrub, plan, and
think.



Pat is strong.

Pat can run fast.



Pat can sing songs.



Seth's Dad

This is Ted.

Ted is Seth's dad.

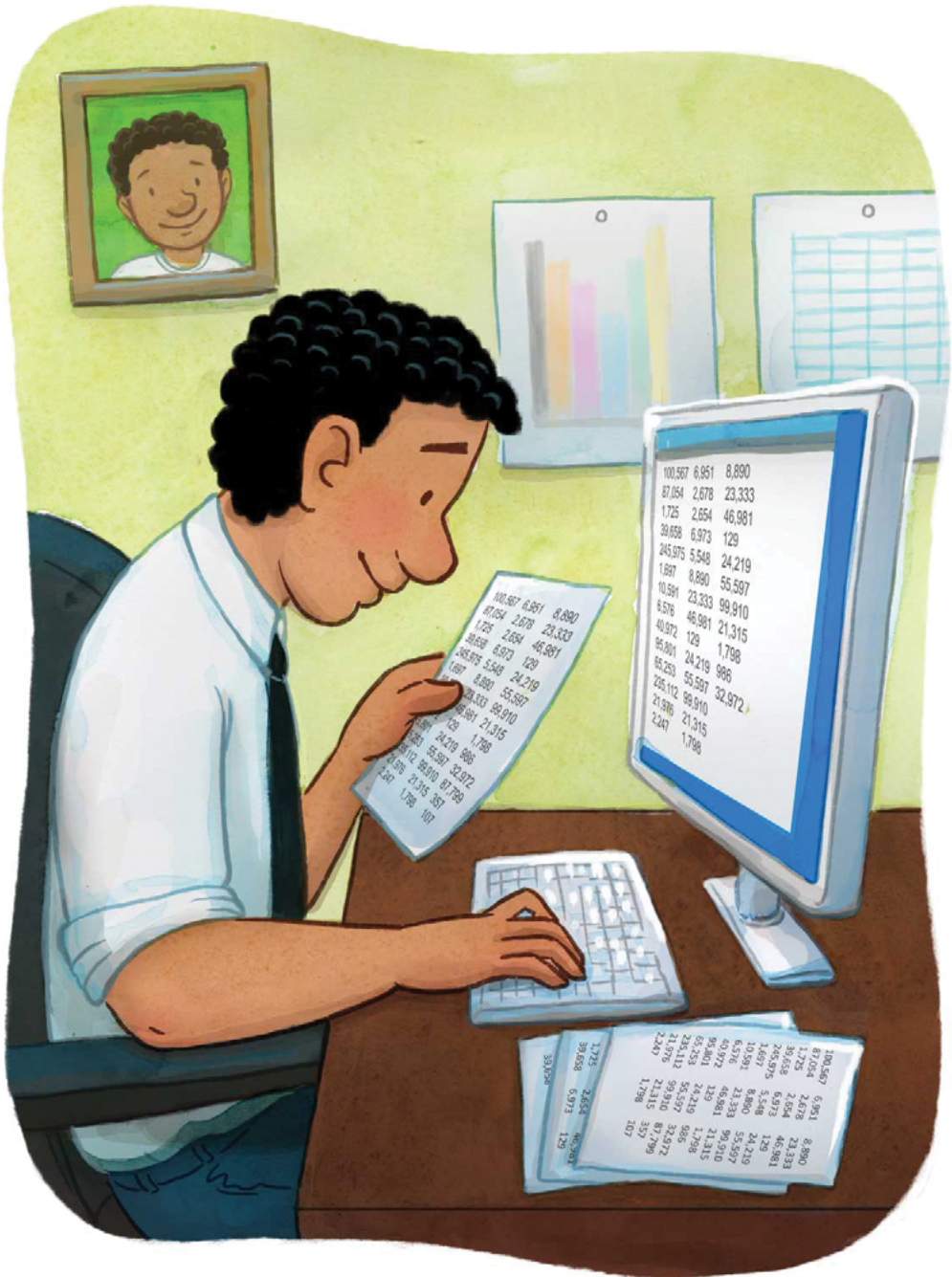


Ted brings his lunch with
him.



Ted **thinks** and plans.

Ted is fast **with math**.



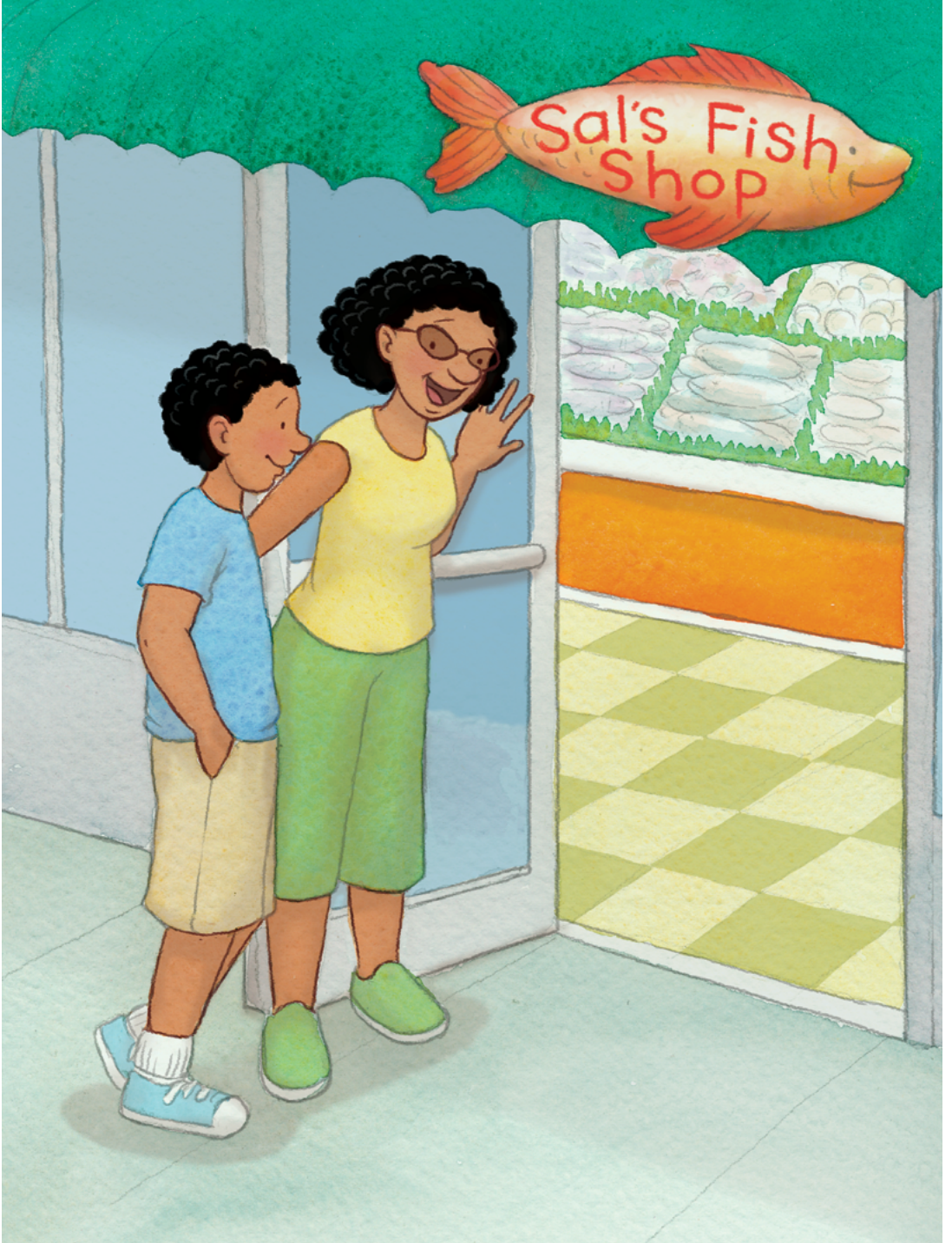
Ted is strong.

Ted can crush tin cans
with his hands.



Sal's Fish Shop

Pat and Seth went in Sal's
Fish Shop.



Sal had **fresh fish**.

Sal had **fresh shrimp**.

Sal had crabs.

Sal had clams.

Sal had **squid**.



Pat got fish and shrimp.



Lunch

Seth had lunch with his mom and dad.

Pat had **shrimp** and **chips**.

Ted had **shrimp**, **fish**, and **chips**.

Seth had ham and **chips**.



Munch, munch.

Crunch, crunch.

Yum, yum.



Seth's Finch

That's Seth's pet finch,
Chip.

Chip can flap his wings.

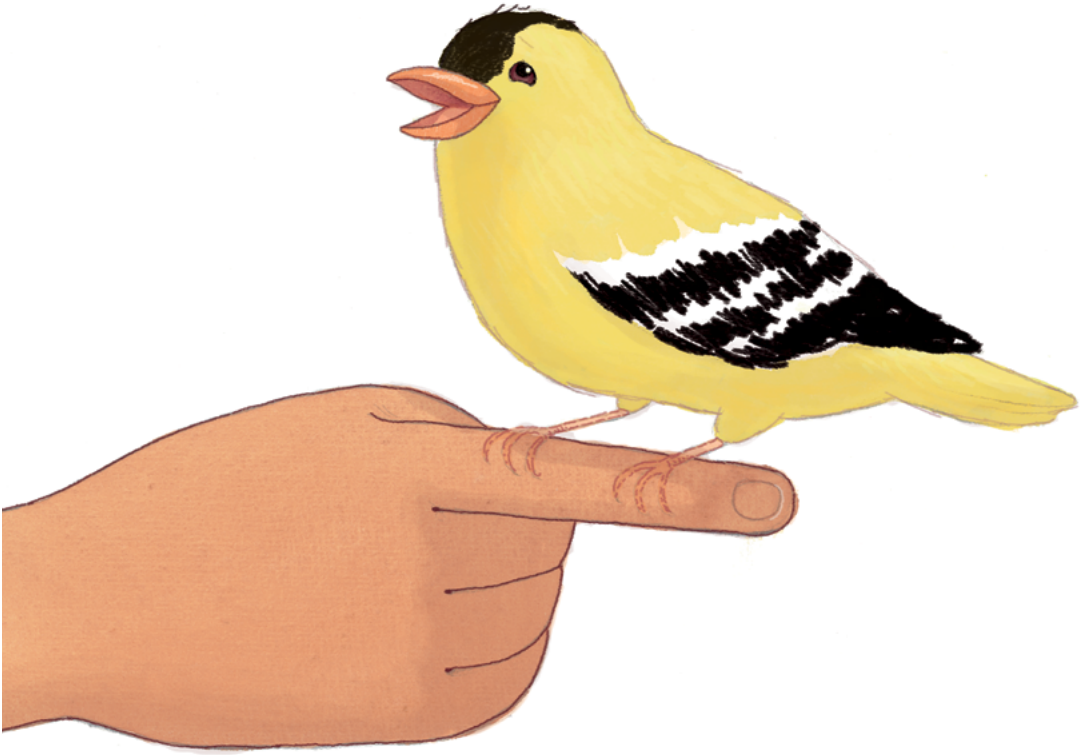
Chip can munch on ants
and bugs.

Chip can sing.



Chip can land on Seth's
hand.

That finch is fun!



Lost Finch

Seth's pet finch, Chip, is lost.

Seth can't spot him.

Pat can't spot him.

Ted can't spot him.



Chip is not on Seth's bed.

Chip is not on Seth's desk.

Then, at last, Pat spots
Chip.

Chip hid in Pat's hat and
slept.



Seth's Sled

Seth's sled went fast.

Seth held on.

Seth hit bumps but did not stop.

Seth hit slush but did not stop.



Then Seth's sled hit mud.

Splash!

Seth got mud on his sled.

Seth got mud on his
pants.

Seth got mud on his hat.



Meg's Tots

This is Meg.

Meg is Pat's best pal.



Pat has 1 lad—Seth.

Meg has 5 tots—Tom, Tim,
Max, Sam, and Wes.

Meg has **quints!**



Pat and Ted help Meg.

Pat sets Tim and Tom on Seth's rug.

Ted sets Sam on Seth's quilt.

Pat sets Max on Seth's bed.

Ted helps Wes stand up on Seth's desk.



Hash and Milk

Pat and Ted had lunch
with Meg's tots.

Max got hash on his chin.

Wes got hash on his bib.

Tim's milk is on Tom.

Then Tom got milk on Tim.

Sam got milk on Pat and
Ted.



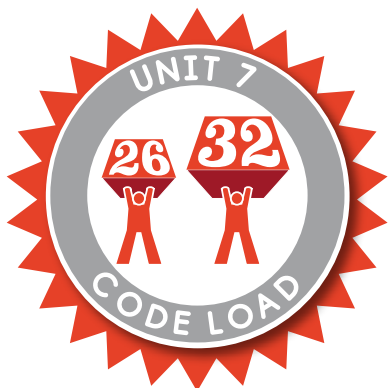
About this Book

This book has been created for use by students learning to read with the Core Knowledge Reading Program. Readability levels are suitable for early readers. The book has also been carefully leveled in terms of its “code load,” or the number of spellings used in the stories.

The English writing system is complex. It uses more than 200 spellings to stand for 40-odd sounds. Many sounds can be spelled several different ways, and many spellings can be pronounced several different ways. This book has been designed to make early reading experiences simpler and more productive by using a subset of the available spellings. It uses *only* spellings students have been taught to sound out as part of their phonics lessons, plus a handful of Tricky Words, which have also been deliberately introduced in the lessons. This means the stories will be 100% decodable if they are assigned at the proper time.

As the students move through the program, they learn new spellings and the “code load” in the decodable Readers increases gradually. The code load graphic on this page indicates the number of spellings students are expected to know in order to read the first story of the book and the number of spellings students are expected to know in order to read the final stories in the book. The columns on the opposite page list the specific spellings and Tricky Words students are expected to recognize at the beginning of this Reader. The bullets at the bottom of the opposite page identify spellings, Tricky Words, and other topics that are introduced gradually in the unit this Reader accompanies.

Visit us on the web at www.coreknowledge.org



Code Knowledge assumed at the beginning of this Reader:

VOWEL SOUNDS AND SPELLINGS:	CONSONANT SOUNDS AND SPELLINGS:	CAPITAL LETTERS:
<i>/i/</i> as in <i>sk<u>i</u>m</i>	<i>/m/</i> as in <i>ri<u>m</u></i>	C, F, I, J, K, M, P, S, T, V
<i>/e/</i> as in <i>be<u>d</u></i>	<i>/t/</i> as in <i>go<u>t</u></i>	
<i>/a/</i> as in <i>ta<u>p</u></i>	<i>/d/</i> as in <i>di<u>p</u></i>	
<i>/u/</i> as in <i>u<u>p</u></i>	<i>/k/</i> as in <i>co<u>t</u>, ki<u>d</u></i>	OTHER:
<i>/o/</i> as in <i>flo<u>p</u></i>	<i>/g/</i> as in <i>lo<u>g</u></i>	<hr/>
	<i>/n/</i> as in <i>pe<u>n</u></i>	• Four- and five-letter words
	<i>/h/</i> as in <i>ha<u>m</u></i>	• 's (for possession)
	<i>/s/</i> as in <i>si<u>t</u></i>	• 't (contraction)
	<i>/f/</i> as in <i>fa<u>t</u></i>	• Punctuation (period, comma, exclamation point)
	<i>/v/</i> as in <i>ve<u>t</u></i>	
	<i>/z/</i> as in <i>zi<u>p</u></i>	TRICKY WORDS:
	<i>/p/</i> as in <i>ti<u>p</u></i>	<hr/>
	<i>/b/</i> as in <i>bu<u>s</u></i>	a, are, blue, l, little, look,
	<i>/l/</i> as in <i>la<u>mp</u></i>	one, the, three, two, yellow
	<i>/r/</i> as in <i>ri<u>p</u></i>	
	<i>/w/</i> as in <i>we<u>t</u></i>	
	<i>/j/</i> as in <i>jo<u>g</u></i>	
	<i>/y/</i> as in <i>ye<u>s</u></i>	
	<i>/x/</i> as in <i>bo<u>x</u></i>	
	consonant clusters	

Code Knowledge added gradually in the unit for this Reader:

- Beginning with "Seth": */th/* as in *thin*; */th/* as in *this*
- Beginning with "Seth's Mom": */ng/* as in *ring*
- Beginning with "Seth's Dad": */ch/* as in *chin*; */sh/* as in *shop*; Capital Letter 'D'
- Beginning with "Sal's Fish Shop": */qu/* as in *quit*
- Beginning with "Lunch": Capital Letter 'L'

Core Knowledge Language Arts Amplify.

Editorial Staff

Susan Lambert, Vice President, CKLA

Julie Weintraub, Senior Account Manager

Elizabeth Wade, PhD, Managing Curriculum Developer

Patricia Erno, Managing Curriculum Developer

Jamie Raade, Senior Curriculum Developer

Amber McWilliams, ELL Specialist

Christina Cox, Copy Editor

Julia Cantuaria, Associate Marketing Manager

Project Management

Matthew Ely, Director of Operations

Jennifer Skelley, Senior Producer

Leslie Johnson, Associate Project Manager

Design and Graphics Staff

Todd Rawson, Design Director

Julia Sverchuk, Creative Director

Erin O'Donnell, Senior Designer

Contributors

Ann Andrew, Desirée Beach, Leslie Beach, Brian Black, Stephanie Cooper, Tim Chi Ly, Nicole Crook, Stephen Currie, Kira Dykema, Carol Emerson, Jennifer Flewelling, Mairin Genova, Marc Goldsmith, Christina Gonzalez Vega, Stephanie Hamilton, Brooke Hudson, Carrie Hughes, Sara Hunt, Rowena Hymer, Jason Jacobs, Leslie Johnson, Annah Kessler, Debra Levitt, Bridget Looney, Christina Martinez, Sarah McClurg, Julie McGeorge, Evelyn Norman, Chris O'Flaherty, Cesar Parra, Leighann Pennington, Heather Perry, Tim Quiroz, Maureen Richel, Jessica Richardson, Carol Ronka, Laura Seal, Cynthia Shields, John Starr, Carmela Stricklett, Alison Tepper, Karen Venditti, Carri Waloven, Michelle Warner, Rachel Wolf

Core Knowledge Language Arts

Core Knowledge Foundation

Series Editor-in-Chief

E. D. Hirsch Jr.

President

Linda Bevilacqua

Editorial Staff

Mick Anderson

Robin Blackshire

Laura Drummond

Emma Earnst

Lucinda Ewing

Sara Hunt

Rosie McCormick

Cynthia Peng

Liz Pettit

Tonya Ronayne

Deborah Samley

Kate Stephenson

Elizabeth Wafler

James Walsh

Sarah Zelinke

Design and Graphics Staff

Kelsie Harman

Liz Loewenstein

Bridget Moriarty

Lauren Pack

Consulting Project Management Services

ScribeConcepts.com

Additional Consulting Services

Erin Kist

Carolyn Pinkerton

Scott Ritchie

Kelina Summers

Acknowledgments

These materials are the result of the work, advice, and encouragement of numerous individuals over many years. Some of those singled out here already know the depth of our gratitude; others may be surprised to find themselves thanked publicly for help they gave quietly and generously for the sake of the enterprise alone. To helpers named and unnamed we are deeply grateful.

Contributors to Earlier Versions of These Materials

Susan B. Albaugh, Kazuko Ashizawa, Kim Berrall, Ang Blanchette, Nancy Braier, Maggie Buchanan, Paula Coyner, Kathryn M. Cummings, Michelle De Groot, Michael Donegan, Diana Espinal, Mary E. Forbes, Michael L. Ford, Sue Fulton, Carolyn Gosse, Dorrit Green, Liza Greene, Ted Hirsch, Danielle Knecht, James K. Lee, Matt Leech, Diane Henry Leipzig, Robin Luecke, Martha G. Mack, Liana Mahoney, Isabel McLean, Steve Morrison, Juliane K. Munson, Elizabeth B. Rasmussen, Ellen Sadler, Rachael L. Shaw, Sivan B. Sherman, Diane Auger Smith, Laura Tortorelli, Khara Turnbull, Miriam E. Vidaver, Michelle L. Warner, Catherine S. Whittington, Jeannette A. Williams.

We would like to extend special recognition to Program Directors Matthew Davis and Souzanne Wright, who were instrumental in the early development of this program.

Schools

We are truly grateful to the teachers, students, and administrators of the following schools for their willingness to field-test these materials and for their invaluable advice: Capitol View Elementary, Challenge Foundation Academy (IN), Community Academy Public Charter School, Lake Lure Classical Academy, Lepanto Elementary School, New Holland Core Knowledge Academy, Paramount School of Excellence, Pioneer Challenge Foundation Academy, PS 26R (the Carteret School), PS 30X (Wilton School), PS 50X (Clara Barton School), PS 96Q, PS 102X (Joseph O. Loretan), PS 104Q (the Bays Water), PS 214K (Michael Friedsam), PS 223Q (Lyndon B. Johnson School), PS 308K (Clara Cardwell), PS 333Q (Goldie Maple Academy), Sequoyah Elementary School, South Shore Charter Public School, Spartanburg Charter School, Steed Elementary School, Thomas Jefferson Classical Academy, Three Oaks Elementary, West Manor Elementary.

And a special thanks to the CKLA Pilot Coordinators, Anita Henderson, Yasmin Lugo-Hernandez, and Susan Smith, whose suggestions and day-to-day support to teachers using these materials in their classrooms were critical.



Credits

Every effort has been taken to trace and acknowledge copyrights. The editors tender their apologies for any accidental infringement where copyright has proved untraceable. They would be pleased to insert the appropriate acknowledgment in any subsequent edition of this publication.

Trademarks and trade names are shown in this publication for illustrative purposes only and are the property of their respective owners. The references to trademarks and trade names given herein do not affect their validity.

All photographs are used under license from Shutterstock, Inc. unless otherwise noted.

Writers

Matt Davis, Erin Kist, Juliane K. Munson,
Rachel E. Wright

Illustrators and Image Sources

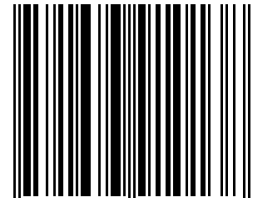
All illustrations by Apryl Stott



Center for
Early Reading
Amplify.

ckla.amplify.com

ISBN 9781683910138



9 781683 910138