



Amplify.

TEXAS

ELEMENTARY LITERACY PROGRAM

Grade 3

UNIT 2

Scales, Feathers, and Fur: Animal Classification

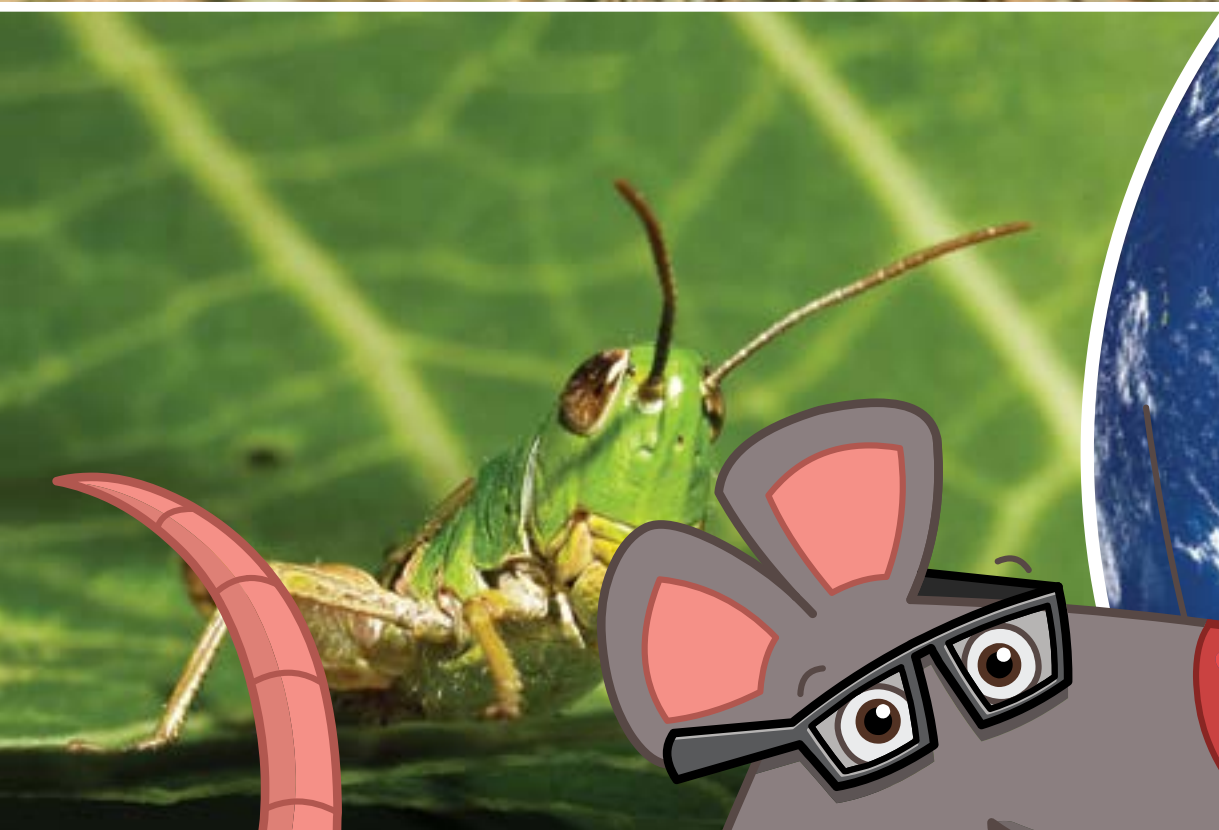
DIGITAL FLIP BOOK

Grade 3

Unit 2

Scales, Feathers, and Fur: Animal Classification

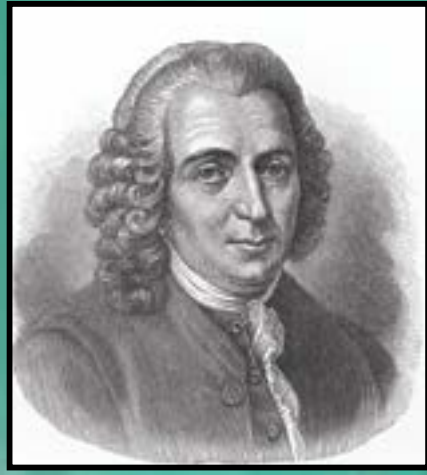
Digital Flip Book



U2.L2.1



U2.L2.2



U2.L2.3

LIVING THINGS

KINGDOM

KINGDOM

KINGDOM

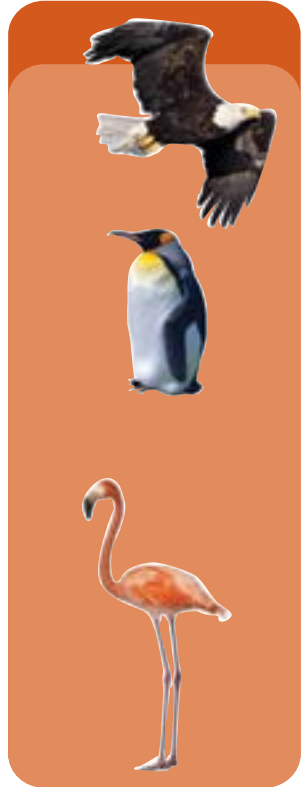
ANIMAL KINGDOM

PLANT KINGDOM



INVERTEBRATES

VERTEBRATES





KINGDOM

Phylum

Class

Class

Order

Order

Order

Order

Family

Family

Family

Family

Family

Family

Family

Family

Genus

Genus

Genus

Genus

Genus

Genus

Genus

Genus

Genus

Genus

Genus

Genus

Genus

Genus

Genus

Species

Species

Species

Species

Species

Species

Species

Species

Species

Species

Species

Species

Species

Species

Species

Species

Species

Species

Species

Species

Species

Species

Species

Species

Species

Species

Species

Species

Species

Species

Species

Species

Species

Species

Species

Species

Species

Species

Species

Species

Species

Species

Species

Species

Species

Species

Species

Species

Species

Species

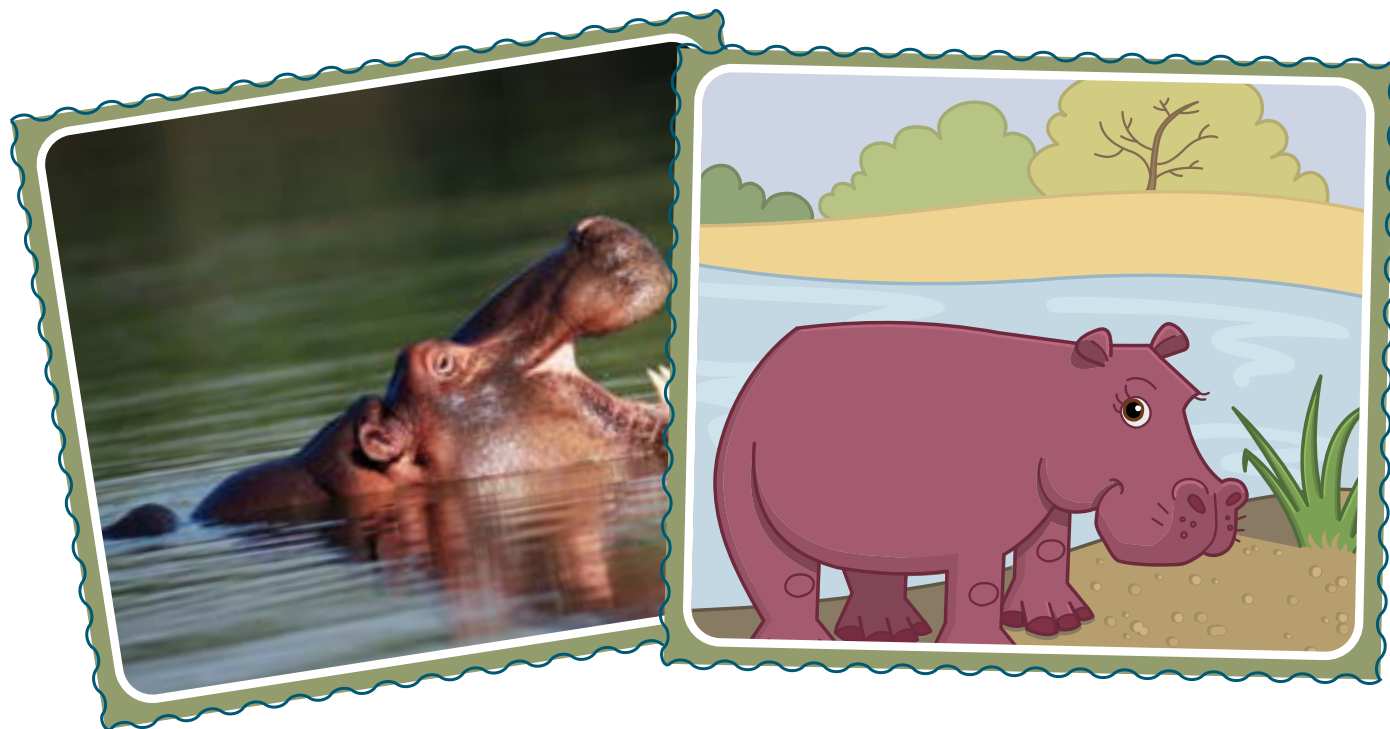
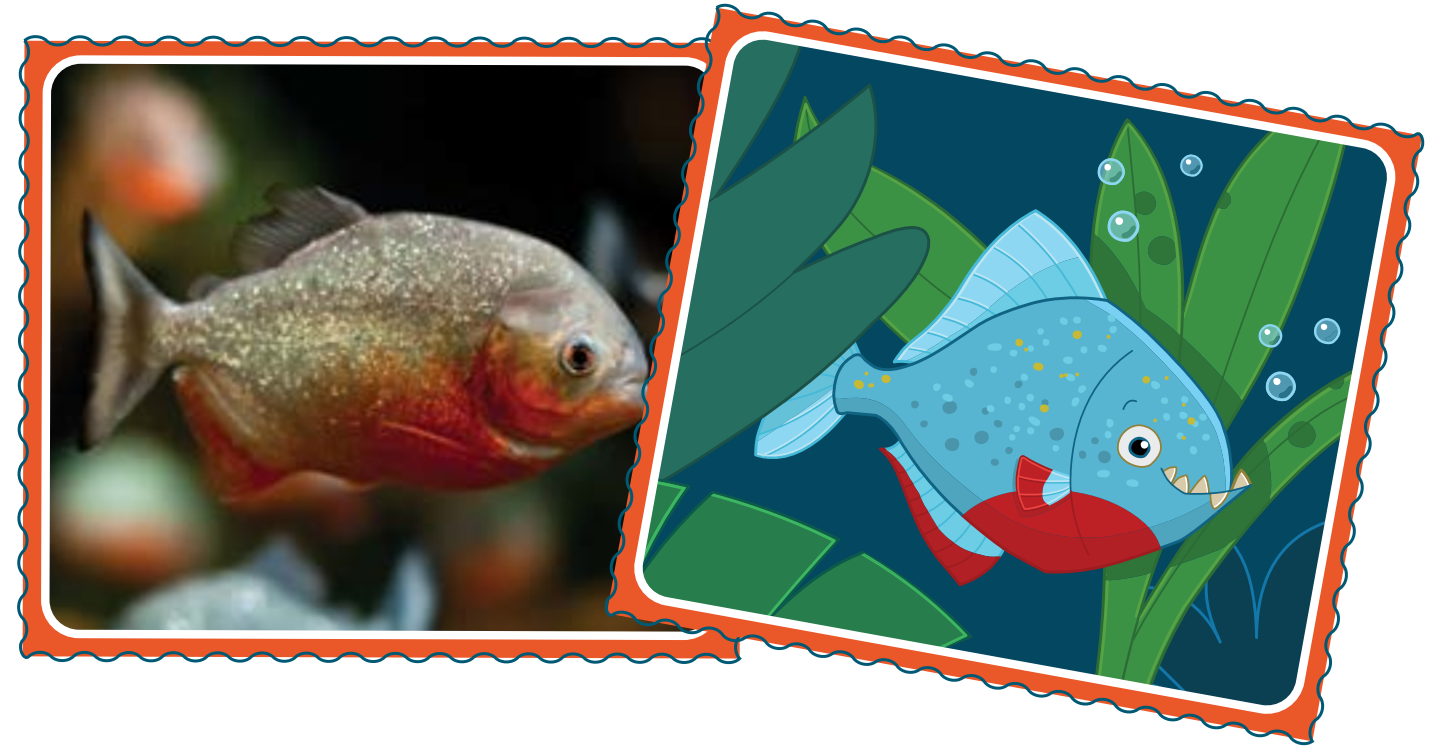
Species

Species

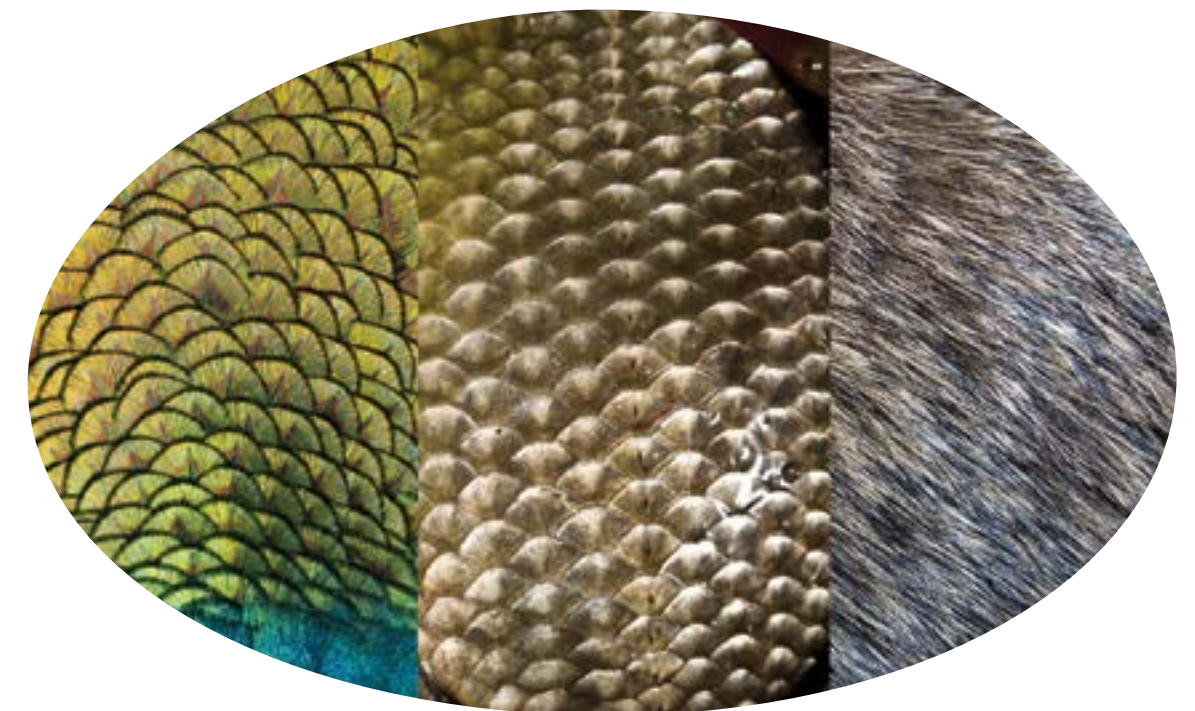
Species

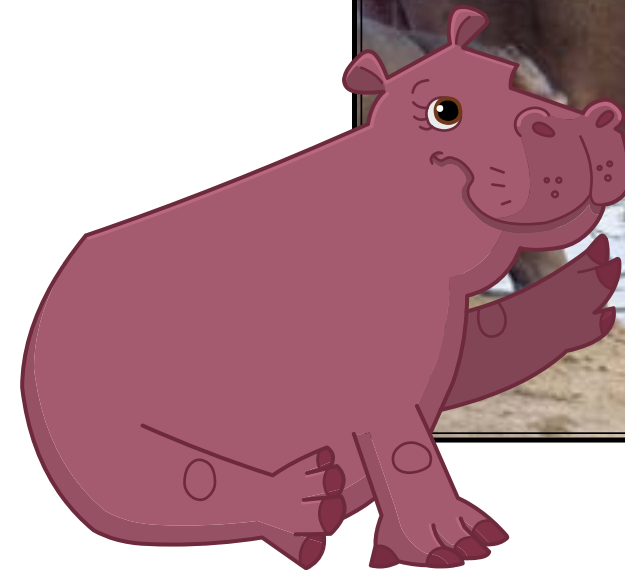
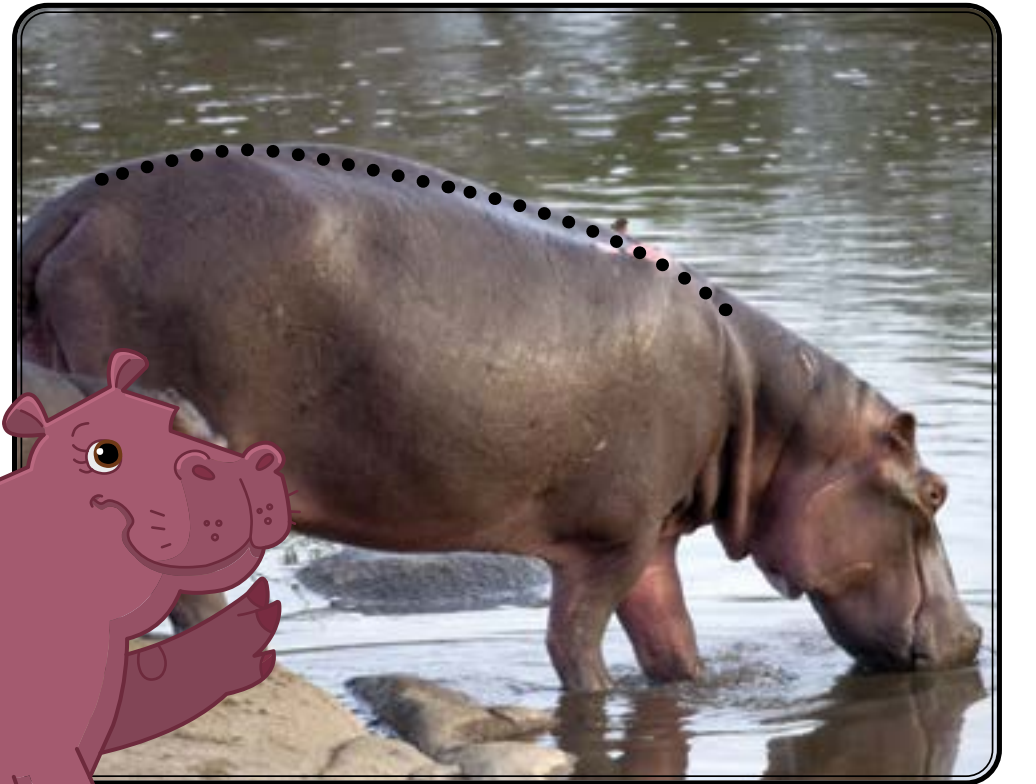
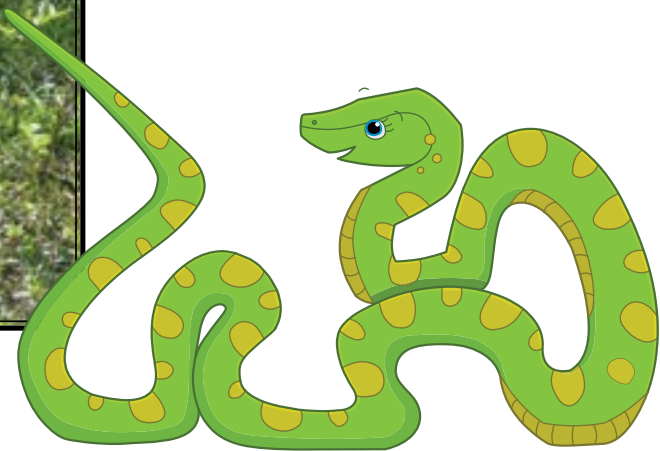
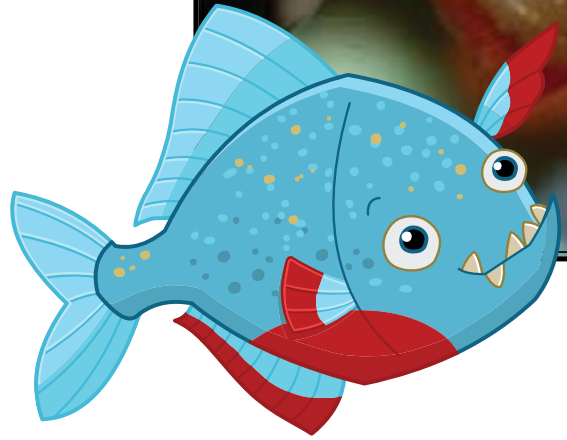
95.4%
INVERTEBRATES

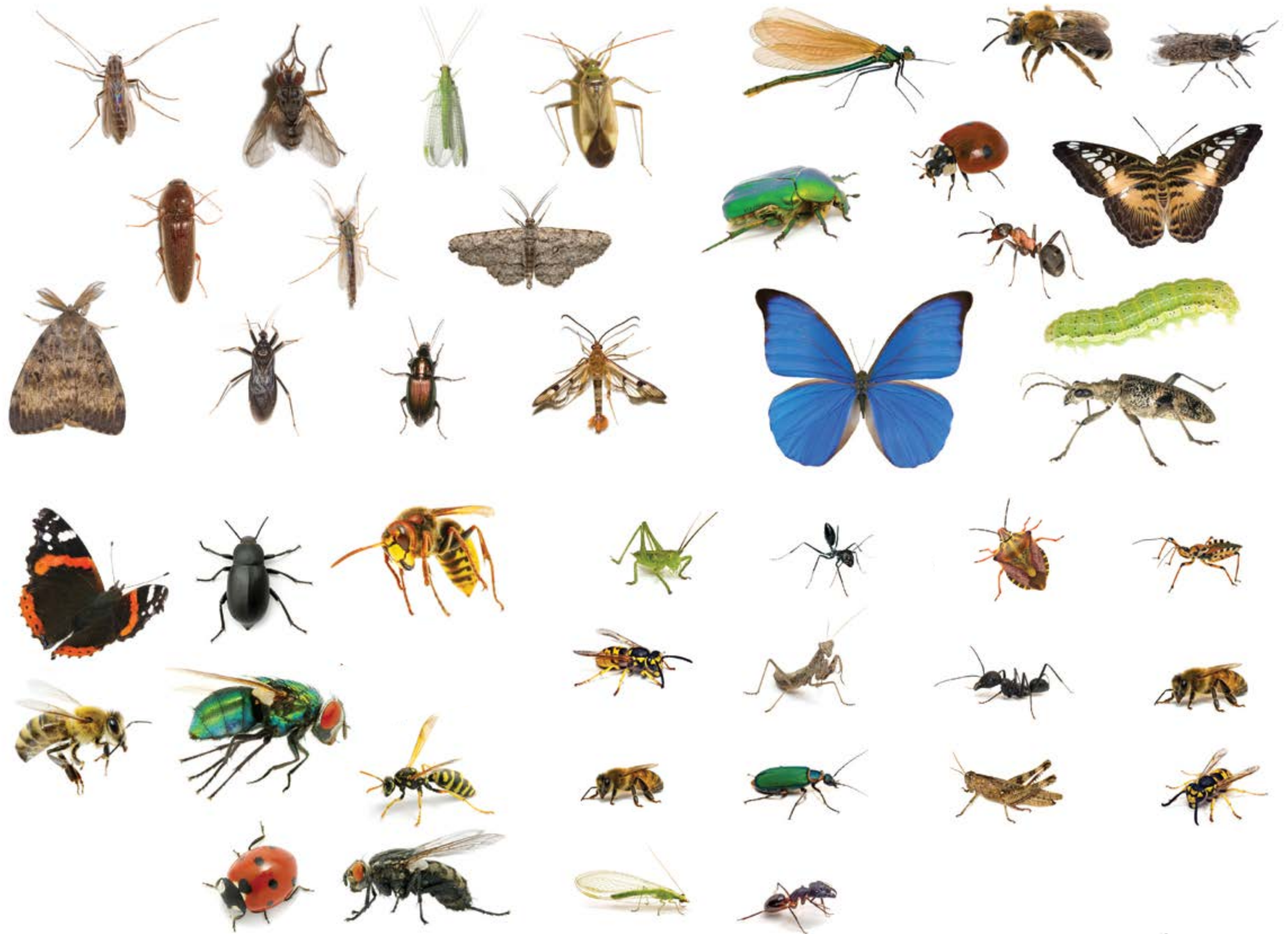
- **2.3% FISH**
- **0.7% REPTILES**
- **0.7% BIRDS**
- **0.5% AMPHIBIANS**
- **0.4% MAMMALS**

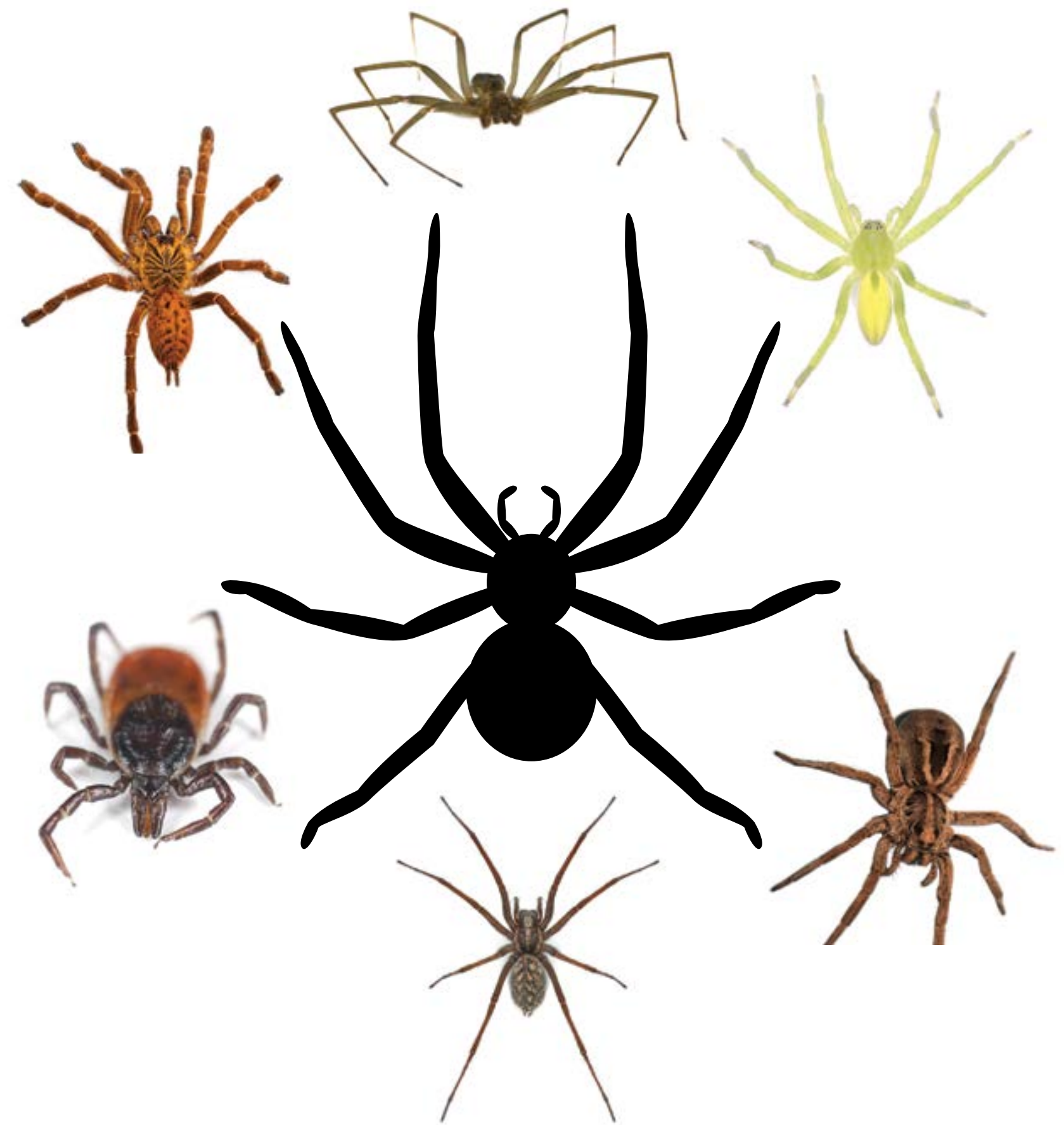






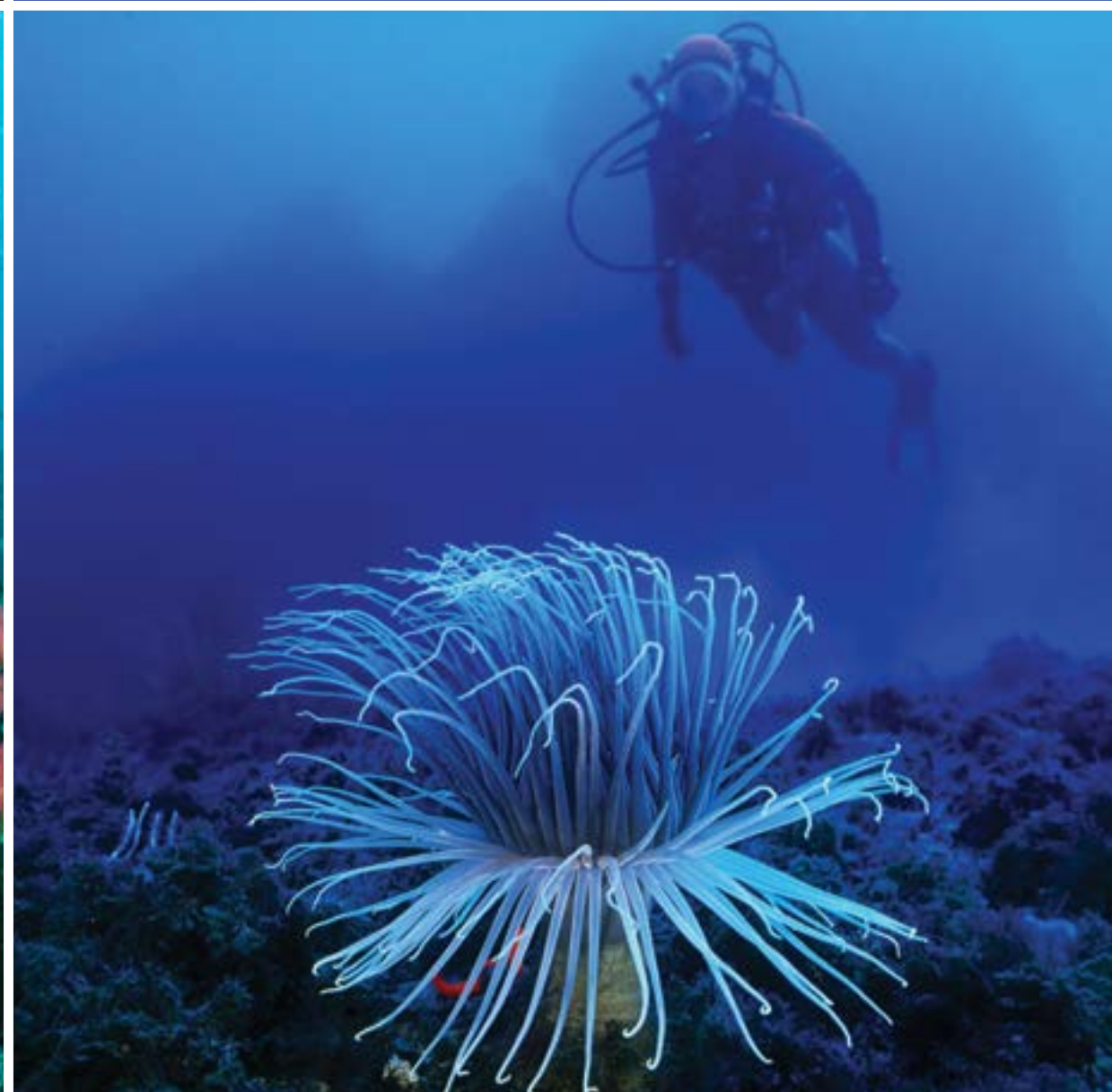
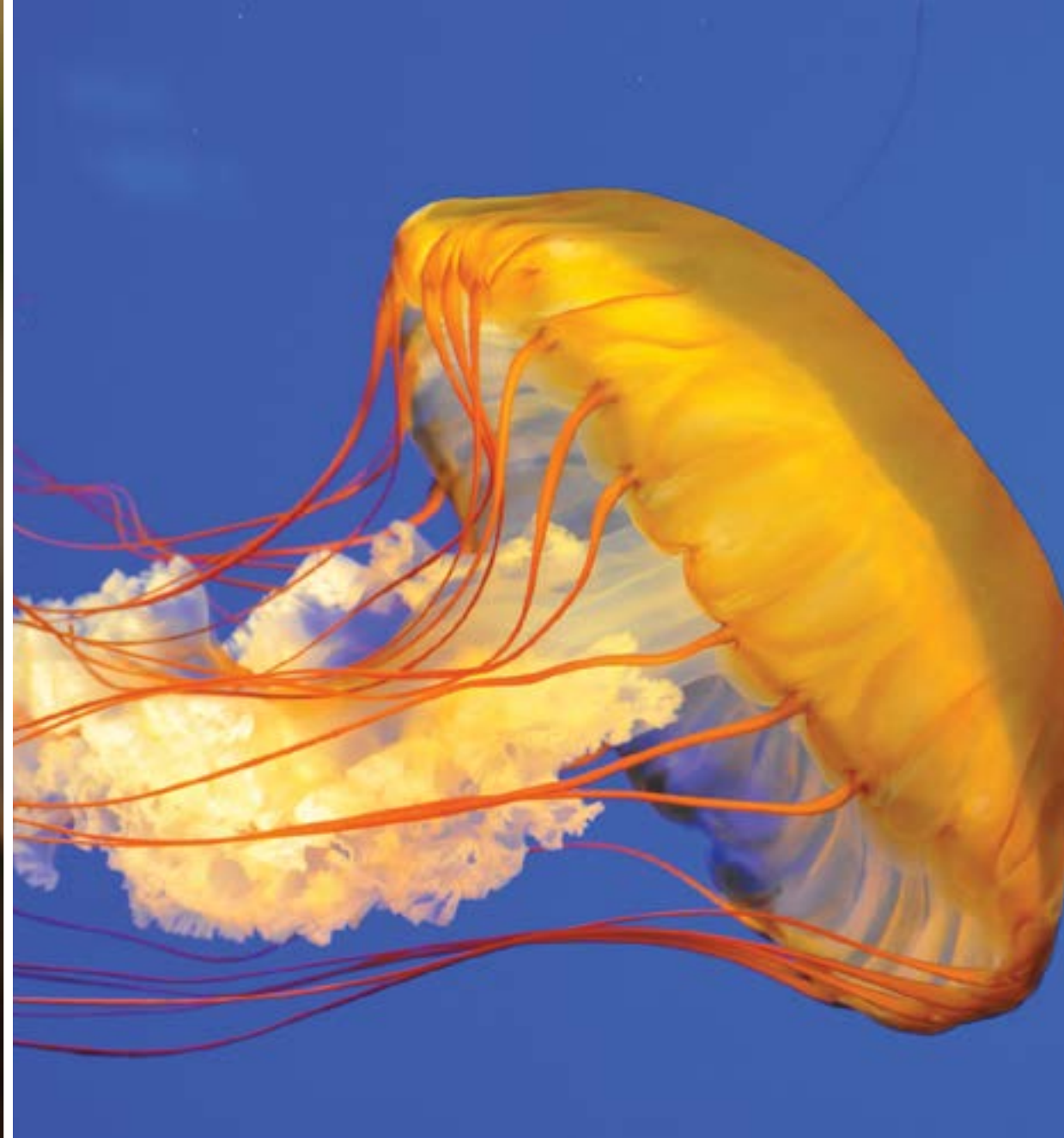








U2.L3.4



Living Things



Kingdom



Phylum



Class



Order



Family

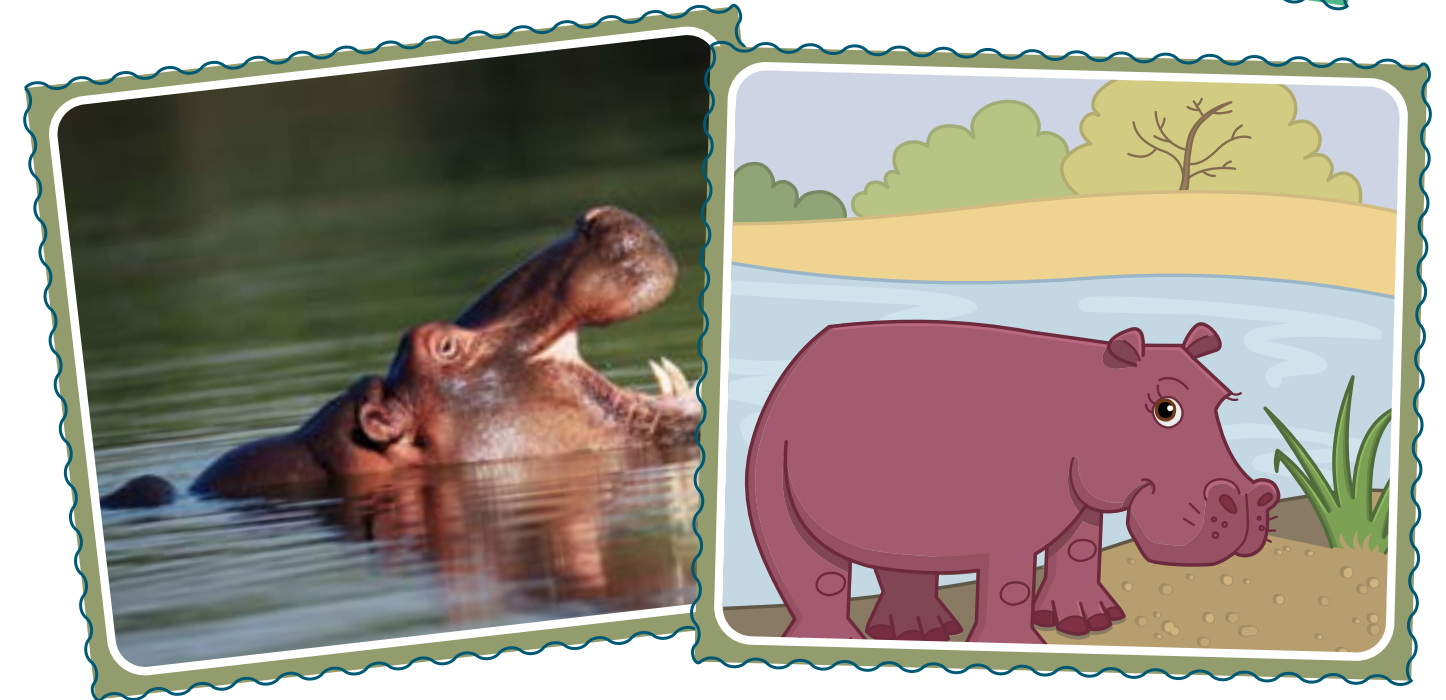
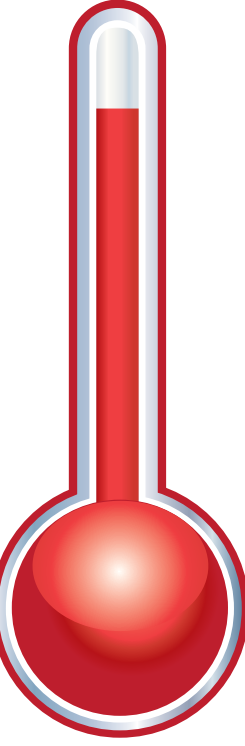
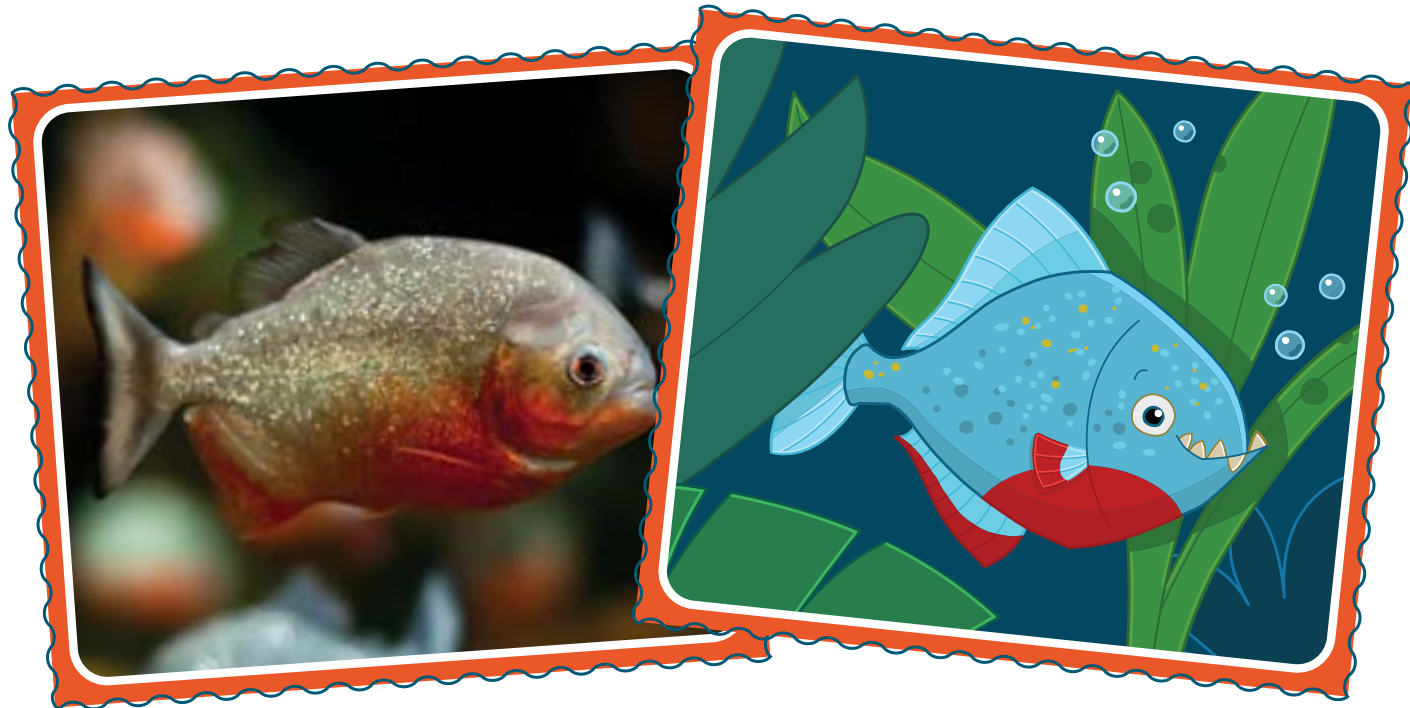
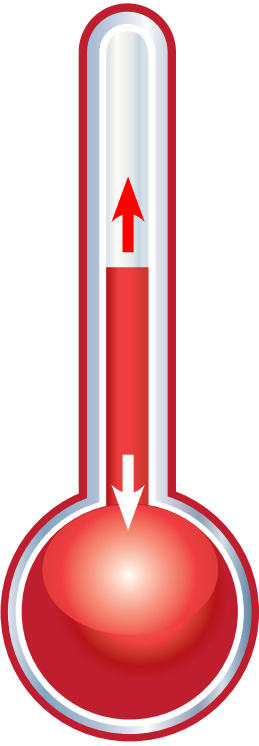


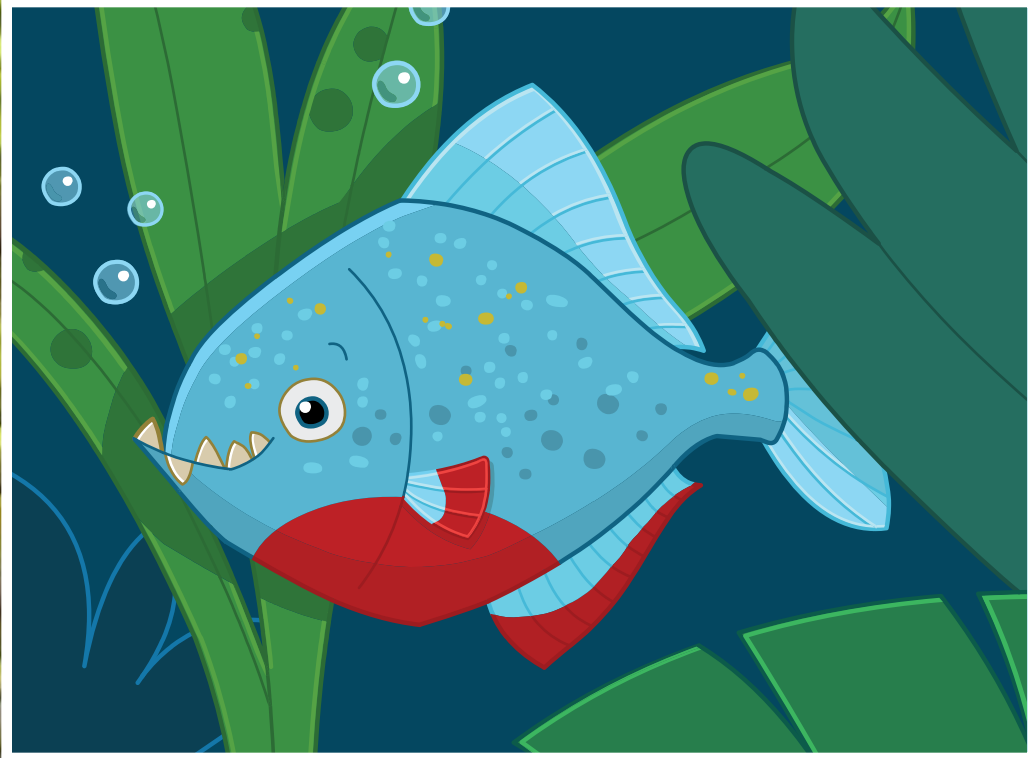
Genus

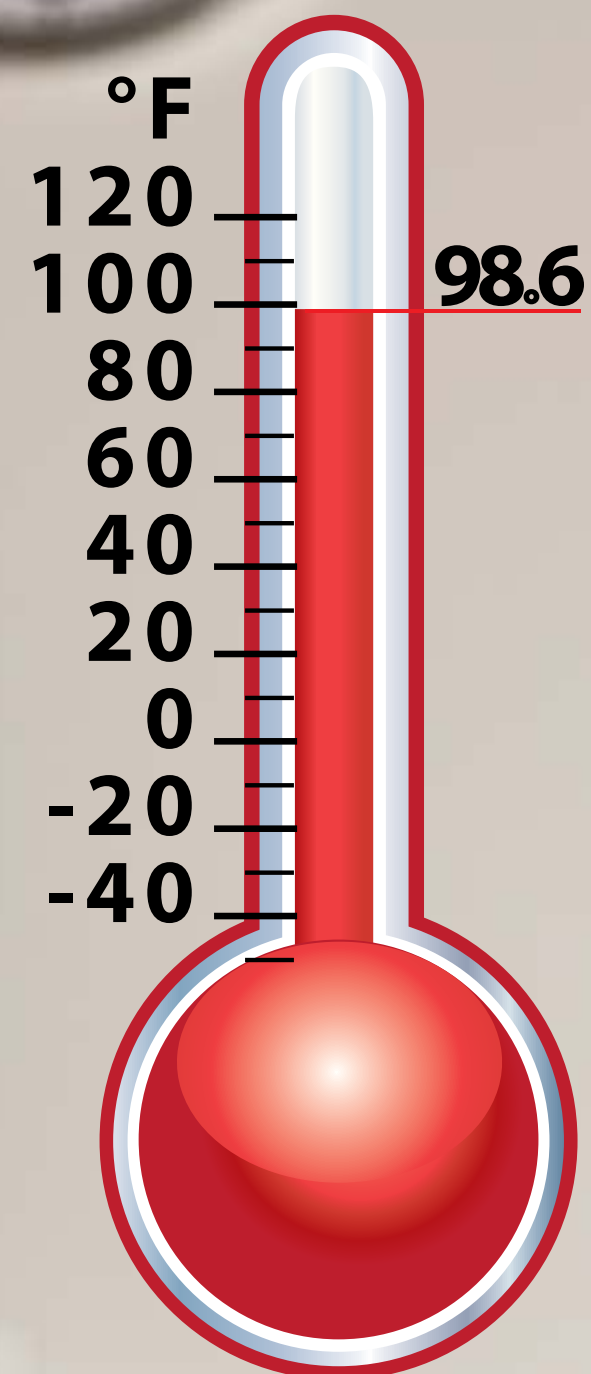


Species









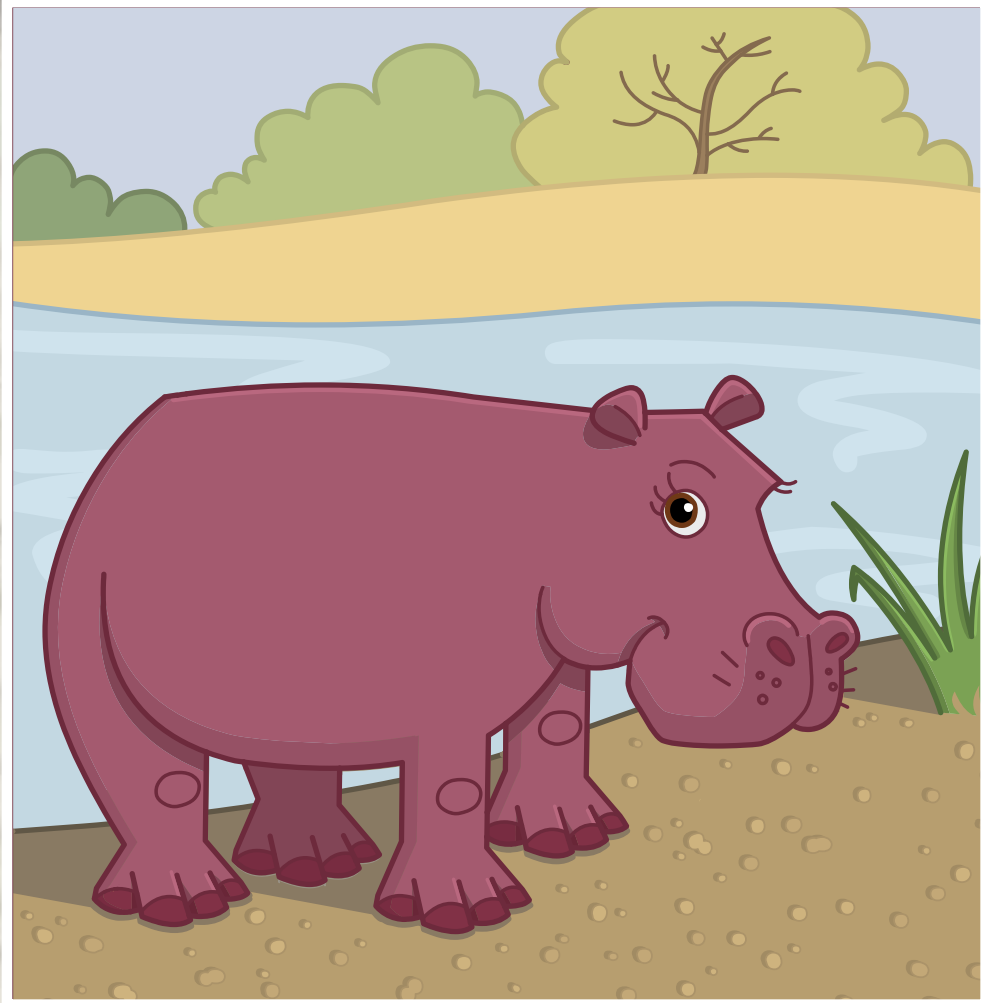
U2.L4.3



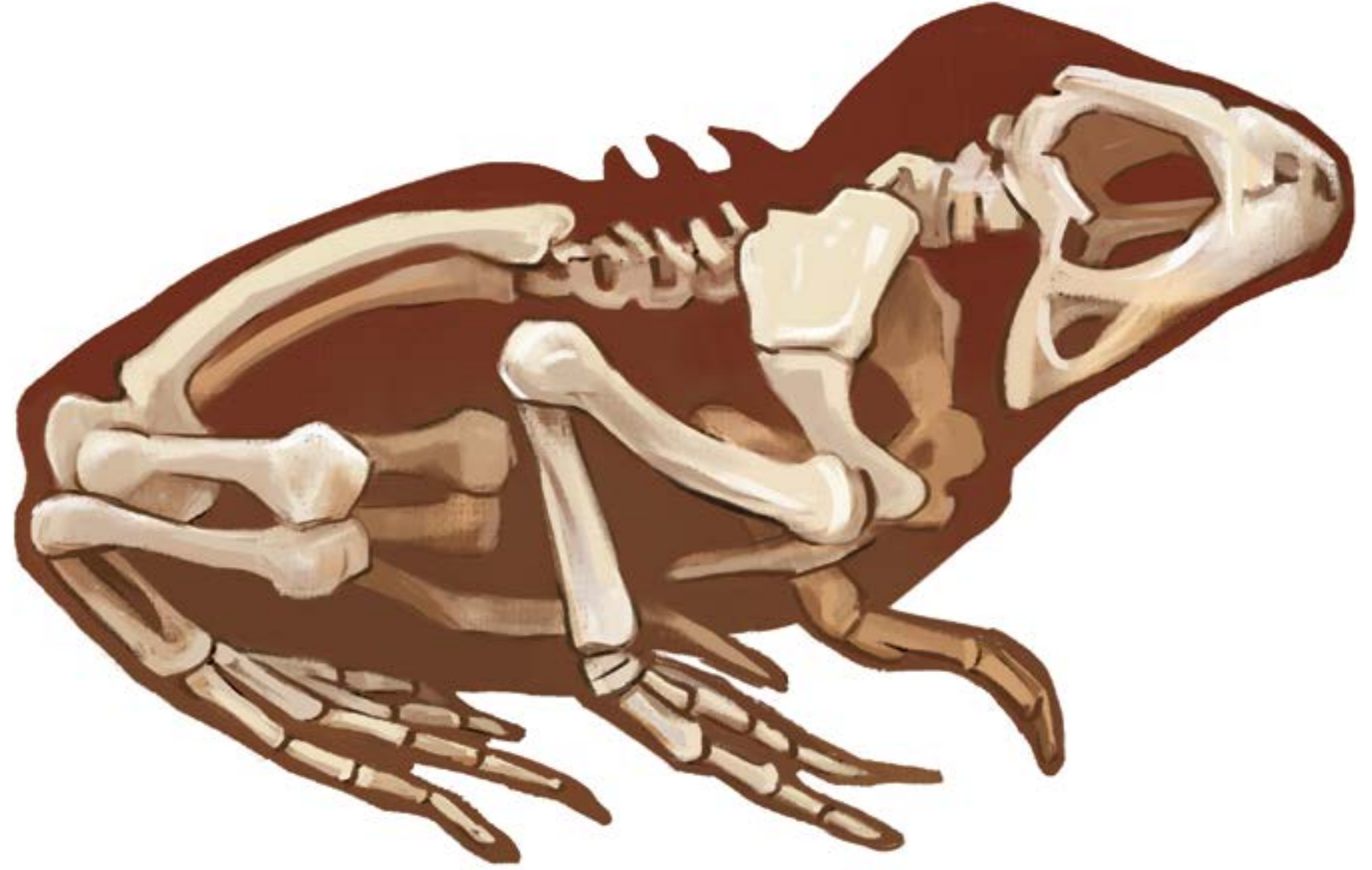


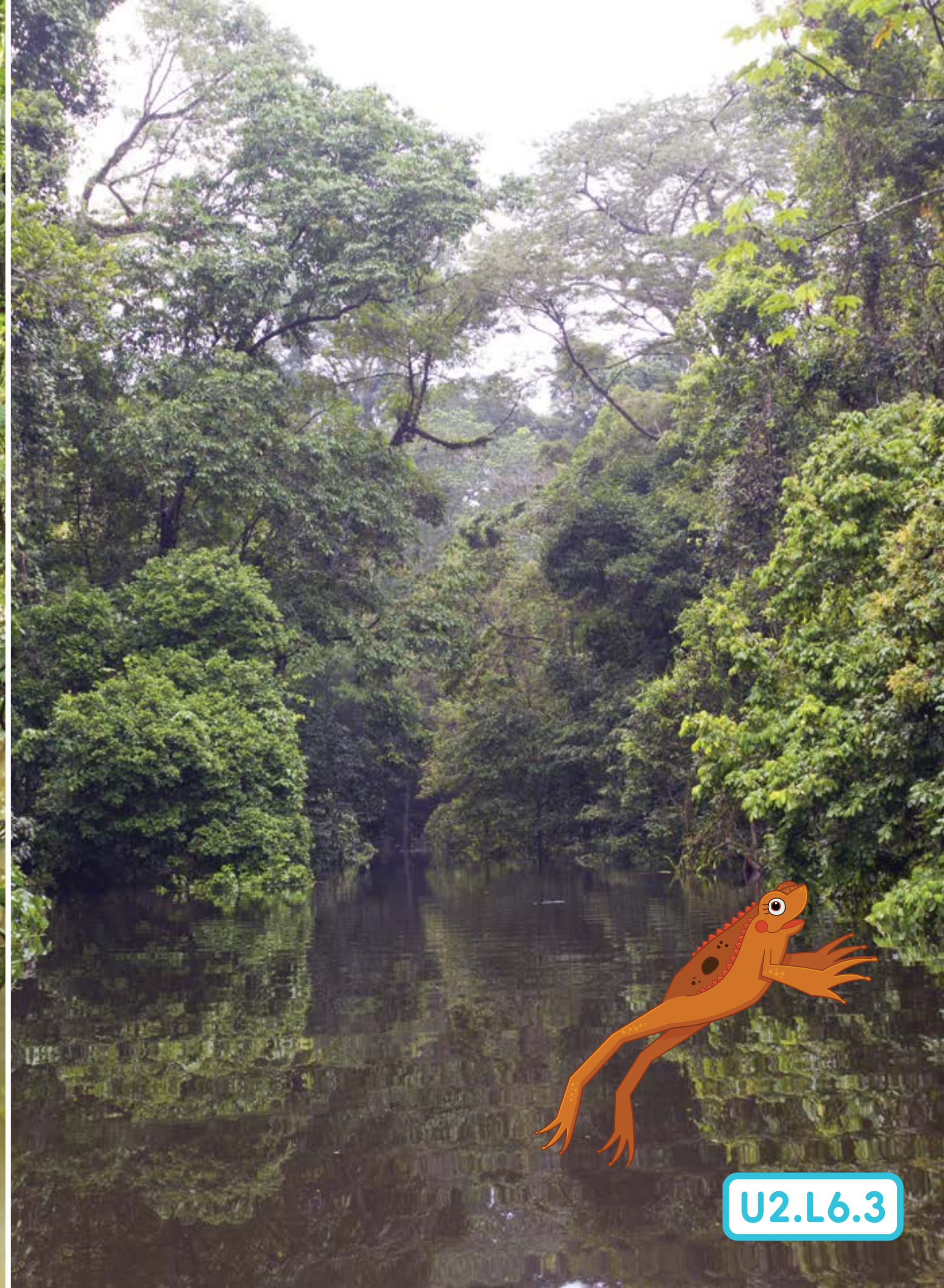


U2.L4.6

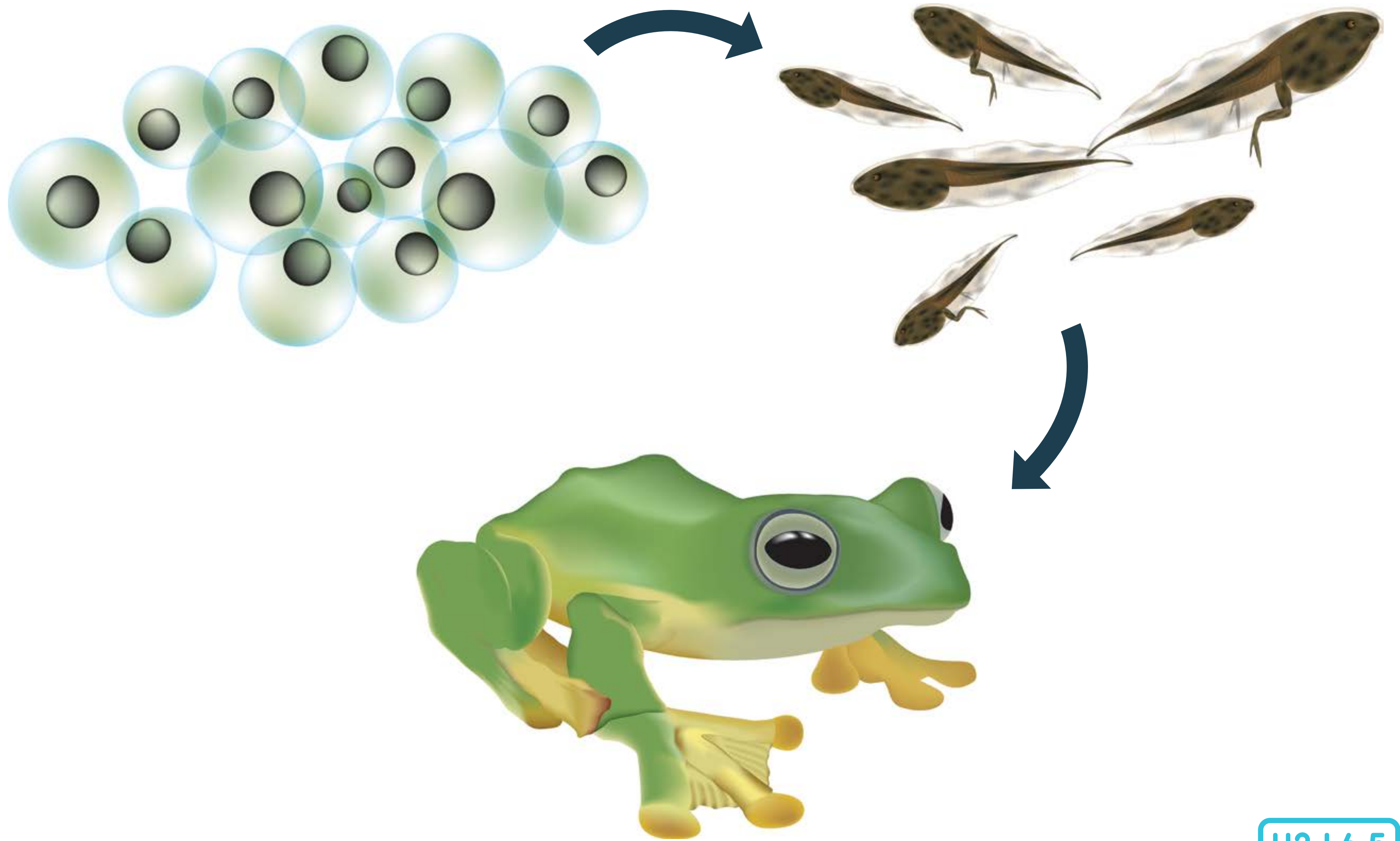


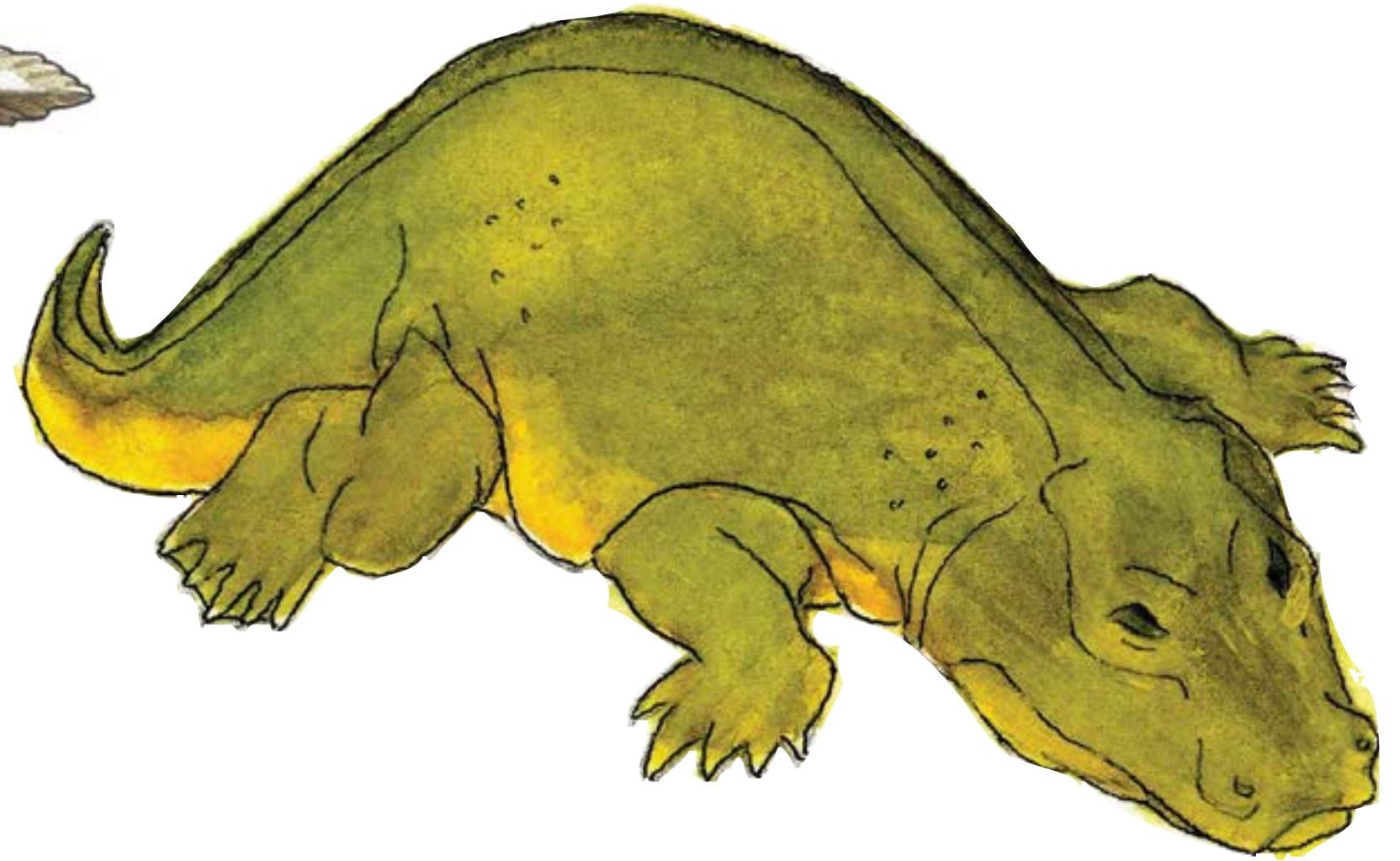
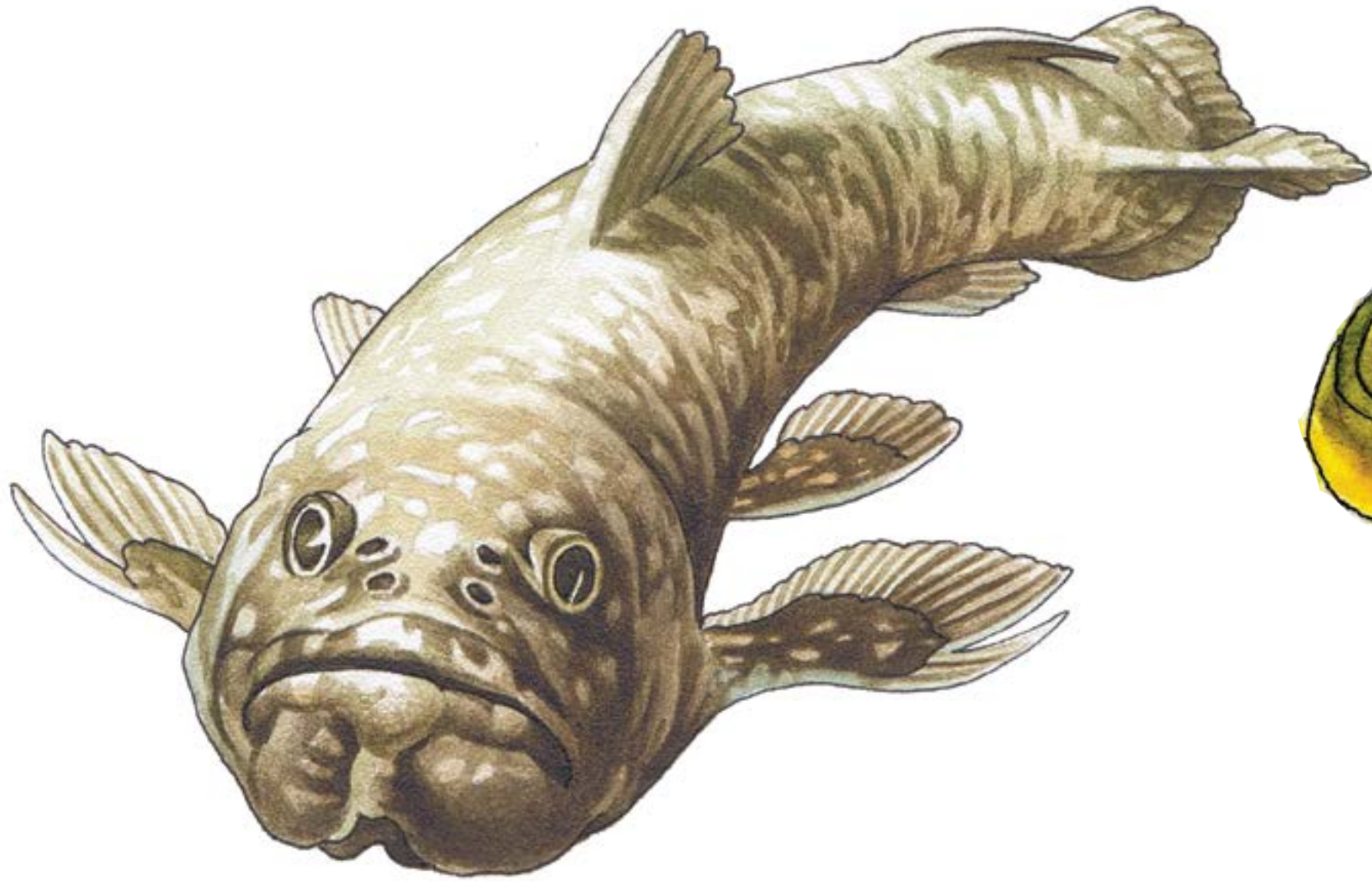




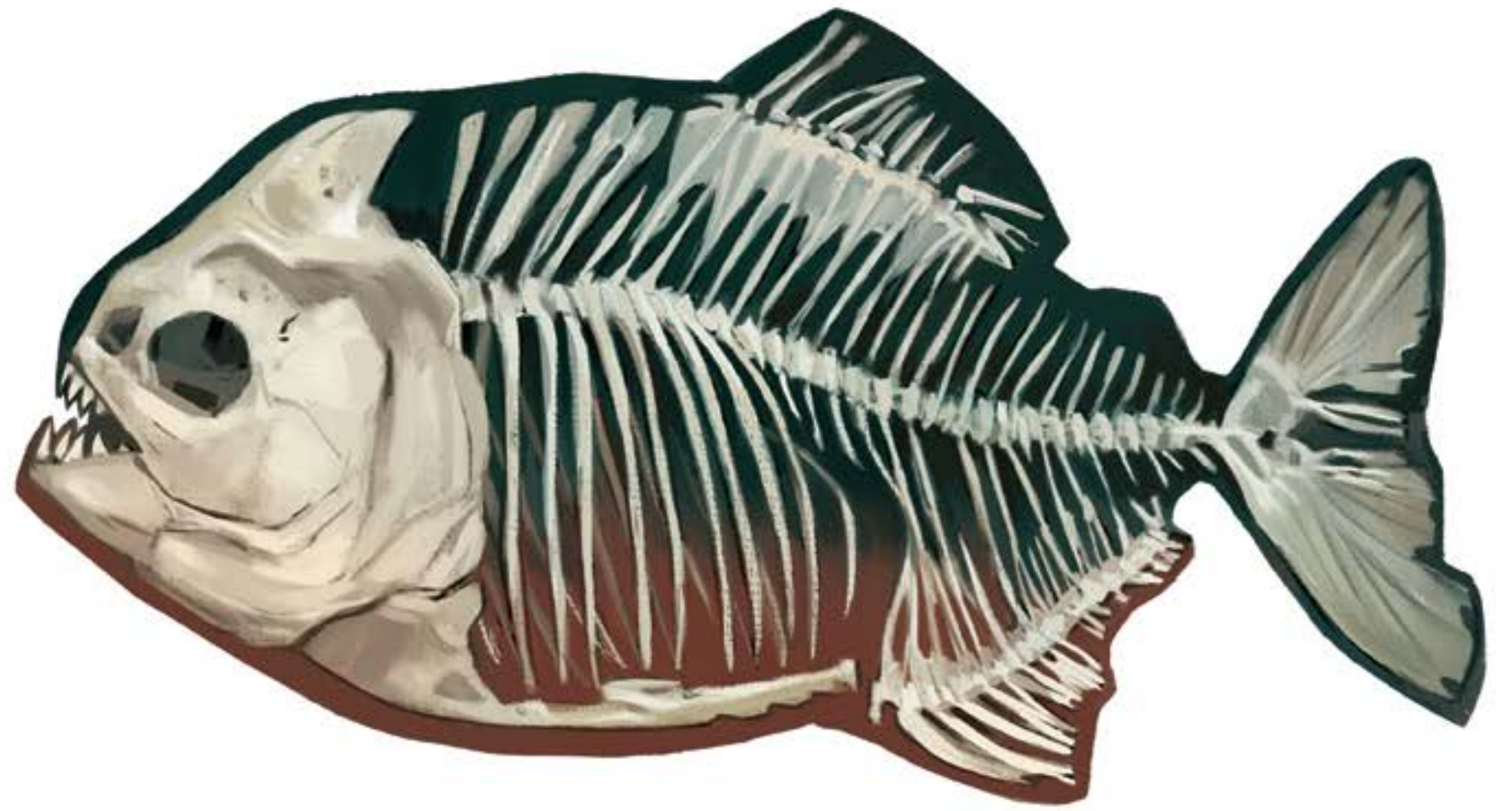


























U2.L10.9







U2.L10.12

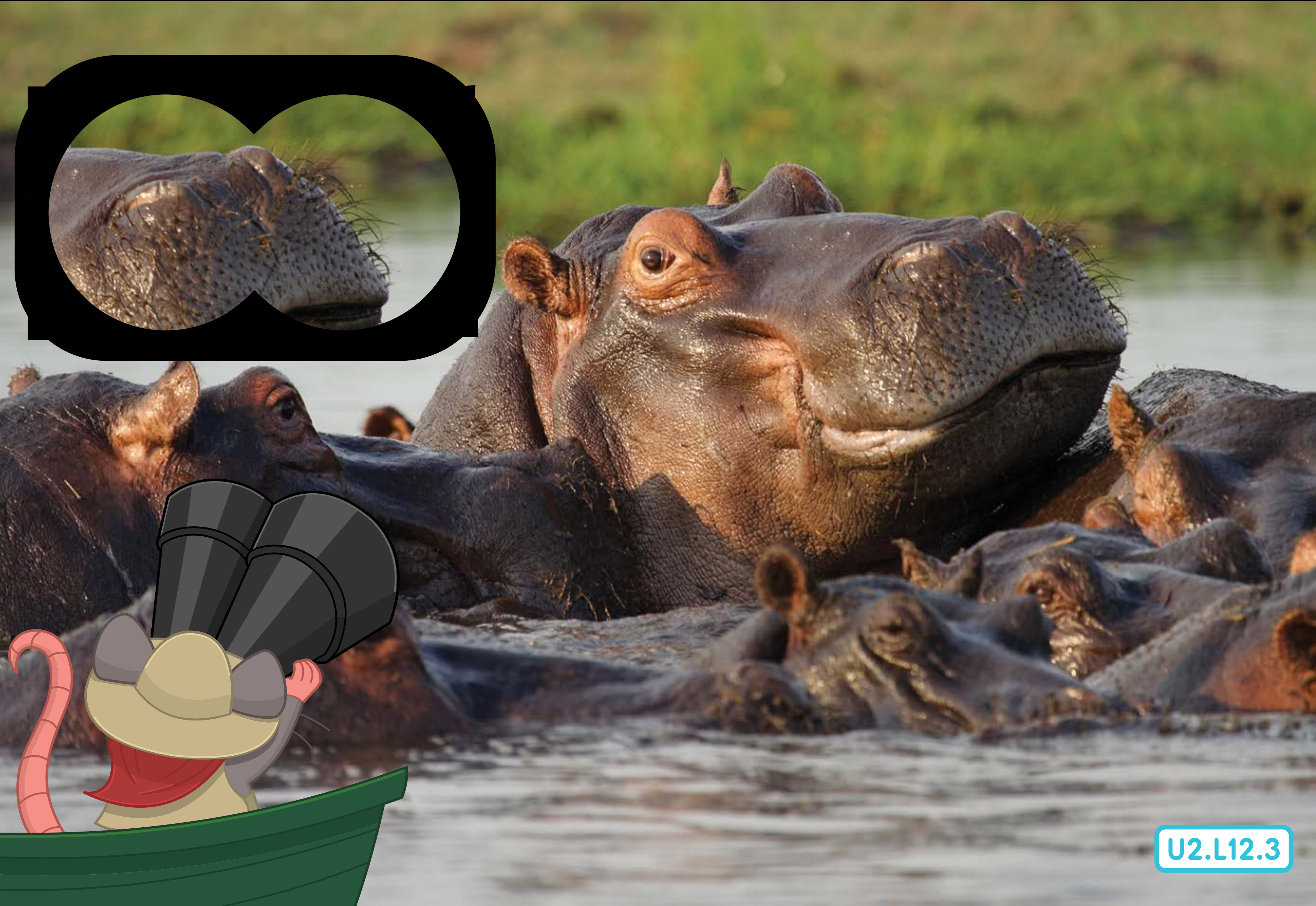


U2.L10.13





U2.L12.2

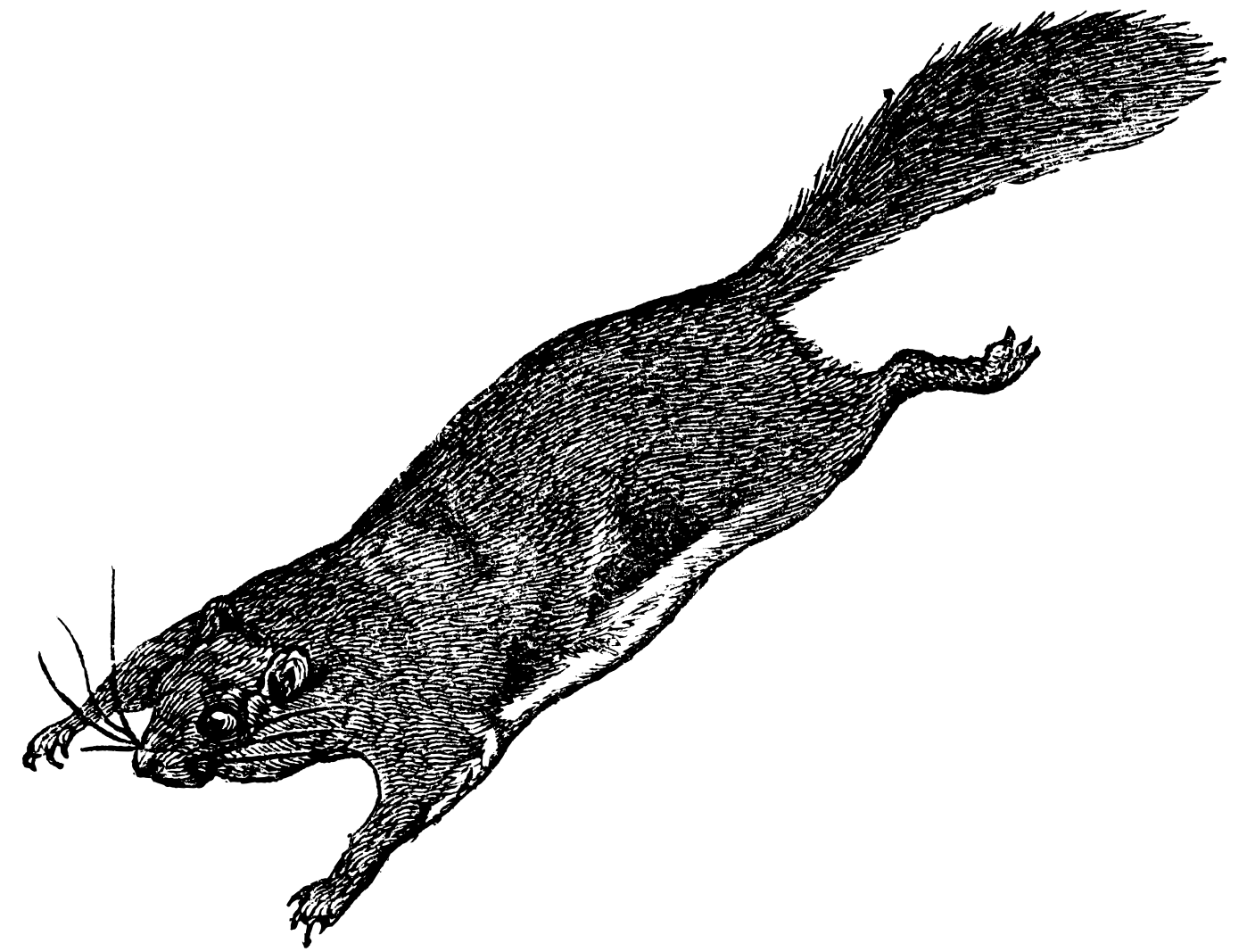




U2.L12.4



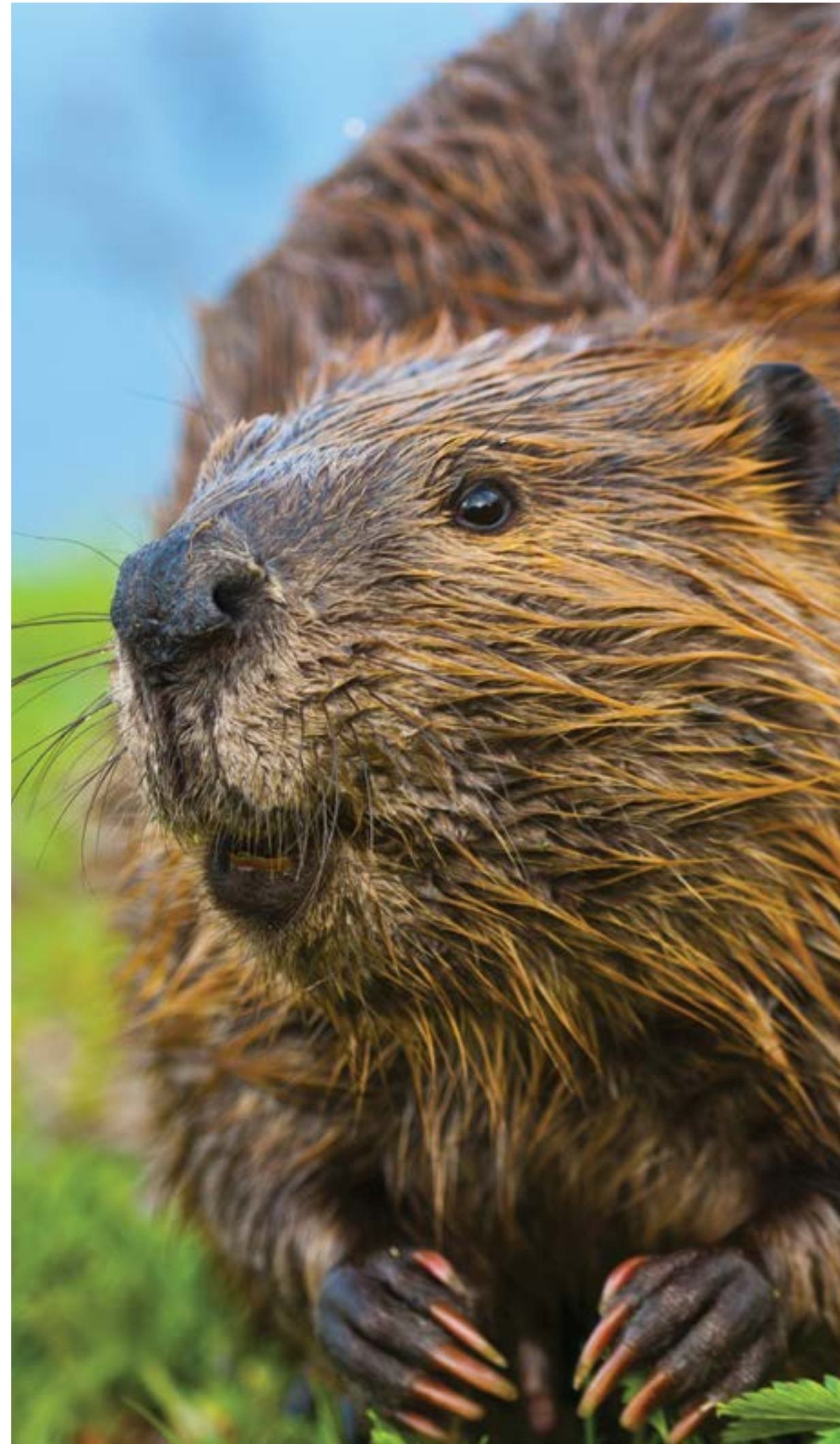
U2.L12.5













General Manager K-8 ELA and SVP, Product

Alexandra Clarke

Vice President, Elementary Literacy Instruction

Susan Lambert

Editorial

Elizabeth Wade, PhD, Director, Elementary ELA Content

Patricia Erno, Associate Director, Elementary ELA Instruction

Kristen Kirchner, Content Writer

Christina Cox, Copy Editor

Product & Project Management

Ayala Falk, Director, Business and Product Strategy, K-8 ELA

Amber McWilliams, Senior Product Manager

Leslie Johnson, Associate Director, K-8 ELA

Zara Chaudhury, Associate Project Manager

Design and Production

Tory Novikova, Product Design Director

Erin O'Donnell, Product Design Manager

Paige Womack, Product Designer

Contributors

Bill Cheng

Nicole Galuszka

Ken Harney

Molly Hensley

David Herubin

Ian Horst

Sara Hunt

James Mendez-Hodes

Christopher Miller

Sheri Pineault

Diana Projansky

Todd Rawson

Jennifer Skelley

Julia Sverchuk

Elizabeth Thiers

Jeanne Thornton

Amanda Tolentino

Series Editor-in-Chief

E. D. Hirsch Jr.

President

Linda Bevilacqua

Editorial Staff

Mick Anderson

Robin Blackshire

Laura Drummond

Emma Earnst

Lucinda Ewing

Sara Hunt

Rosie McCormick

Cynthia Peng

Liz Pettit

Tonya Ronayne

Deborah Samley

Kate Stephenson

Elizabeth Wafler

James Walsh

Sarah Zelinke

Acknowledgments

These materials are the result of the work, advice, and encouragement of numerous individuals over many years. Some of those singled out here already know the depth of our gratitude; others may be surprised to find themselves thanked publicly for help they gave quietly and generously for the sake of the enterprise alone. To helpers named and unnamed we are deeply grateful.

Contributors to Earlier Versions of These Materials

Susan B. Albaugh, Kazuko Ashizawa, Kim Berrall, Ang Blanchette, Nancy Braier, Maggie Buchanan, Paula Coyner, Kathryn M. Cummings, Michelle De Groot, Michael Donegan, Diana Espinal, Mary E. Forbes, Michael L. Ford, Sue Fulton, Carolyn Gosse, Dorrit Green, Liza Greene, Ted Hirsch, Danielle Knecht, James K. Lee, Matt Leech, Diane Henry Leipzig, Robin Luecke, Martha G. Mack, Liana Mahoney, Isabel McLean, Steve Morrison, Juliane K. Munson, Elizabeth B. Rasmussen, Ellen Sadler, Rachael L. Shaw, Sivan B. Sherman, Diane Auger Smith, Laura Tortorelli, Khara Turnbull, Miriam E. Vidaver, Michelle L. Warner, Catherine S. Whittington, Jeannette A. Williams.

We would like to extend special recognition to Program Directors Matthew Davis and Souzanne Wright, who were instrumental in the early development of this program.

Schools

We are truly grateful to the teachers, students, and administrators of the following schools for their willingness to field-test these materials and for their invaluable advice: Capitol View Elementary, Challenge Foundation Academy (IN), Community Academy Public Charter School, Lake Lure Classical Academy, Lepanto Elementary School, New Holland Core Knowledge Academy, Paramount School of Excellence, Pioneer Challenge Foundation Academy, PS 26R (the Carteret School), PS 30X (Wilton School), PS 50X (Clara Barton School), PS 96Q, PS 102X (Joseph O. Loretan), PS 104Q (the Bays Water), PS 214K (Michael Friedsam), PS 223Q (Lyndon B. Johnson School), PS 308K (Clara Cardwell), PS 333Q (Goldie Maple Academy), Sequoyah Elementary School, South Shore Charter Public School, Spartanburg Charter School, Steed Elementary School, Thomas Jefferson Classical Academy, Three Oaks Elementary, West Manor Elementary.

And a special thanks to the Pilot Coordinators, Anita Henderson, Yasmin Lugo-Hernandez, and Susan Smith, whose suggestions and day-to-day support to teachers using these materials in their classrooms were critical.

Design and Graphics Staff

Kelsie Harman

Liz Loewenstein

Bridget Moriarty

Lauren Pack

Consulting Project Management Services

ScribeConcepts.com

Additional Consulting Services

Erin Kist

Carolyn Pinkerton

Scott Ritchie

Kelina Summers

Notice and Disclaimer: The agency has developed these learning resources as a contingency option for school districts. These are optional resources intended to assist in the delivery of instructional materials in this time of public health crisis. Feedback will be gathered from educators and organizations across the state and will inform the continuous improvement of subsequent units and editions. School districts and charter schools retain the responsibility to educate their students and should consult with their legal counsel regarding compliance with applicable legal and constitutional requirements and prohibitions.

Given the timeline for development, errors are to be expected. If you find an error, please email us at texashomelearning@tea.texas.gov.

This work is licensed under a Creative Commons Attribution-NonCommercial-ShareAlike 4.0 International License.

You are free:

to Share—to copy, distribute, and transmit the work

to Remix—to adapt the work

Under the following conditions:

Attribution—You must attribute any adaptations of the work in the following manner:

This work is based on original works of Amplify Education, Inc. (amplify.com) and the Core Knowledge Foundation (coreknowledge.org) made available under a Creative Commons Attribution-NonCommercial-ShareAlike 4.0 International License. This does not in any way imply endorsement by those authors of this work.

Noncommercial—You may not use this work for commercial purposes.

Share Alike—If you alter, transform, or build upon this work, you may distribute the resulting work only under the same or similar license to this one.

With the understanding that:

For any reuse or distribution, you must make clear to others the license terms of this work. The best way to do this is with a link to this web page:

<https://creativecommons.org/licenses/by-nc-sa/4.0/>

© 2020 Amplify Education, Inc.
amplify.com

Trademarks and trade names are shown in this book strictly for illustrative and educational purposes and are the property of their respective owners. References herein should not be regarded as affecting the validity of said trademarks and trade names.

Credits

Every effort has been taken to trace and acknowledge copyrights. The editors tender their apologies for any accidental infringement where copyright has proved untraceable. They would be pleased to insert the appropriate acknowledgment in any subsequent edition of this publication. Trademarks and trade names are shown in this publication for illustrative purposes only and are the property of their respective owners. The references to trademarks and trade names given herein do not affect their validity.

All photographs are used under license from Shutterstock, Inc. unless otherwise noted.

Expert Reviewer

Christine L. May

Writers

Catherine S. Whittington

Illustrators and Image Sources

Cover: Amplify; U2.L2.1: Shutterstock; U2.L2.1 (Rattenborough): Alisa Haggard; U2.L2.2: Shutterstock; U2.L2.3: Simini Blocker; U2.L2.3 (inset): Shutterstock; U2.L2.4: Shutterstock; U2.L2.5: Shutterstock; U2.L2.6: Core Knowledge Staff; U2.L2.7: Core Knowledge Staff; U2.L2.8 (illustrations): Alisa Haggard; U2.L2.8 (frog): Shutterstock; U2.L2.8 (fish): Shutterstock; U2.L2.8 (hippo): Shutterstock; U2.L2.8 (crane): Shutterstock; U2.L2.8 (snake): JanRehschuh / Wikimedia Commons / Creative Commons Attribution-Share Alike 3.0 Unported, <http://creativecommons.org/licenses/by-sa/3.0/deed.en> / modified from original; U2.L2.9: Shutterstock; U2.L2.10: Shutterstock; U2.L3.1 (illustrations): Alisa Haggard; U2.L3.1 (frog): Alisa Haggard; U2.L3.1 (fish): Alisa Haggard; U2.L3.1 (hippo): Alisa Haggard; U2.L3.1 (crane): Alisa Haggard; U2.L3.1 (snake): Alisa Haggard; U2.L3.2: Shutterstock; U2.L3.3: Shutterstock; U2.L3.4: Shutterstock; U2.L3.5: Shutterstock; U2.L3.6: Shutterstock; U2.L4.1 (illustrations): Alisa Haggard; U2.L4.1 (frog): Shutterstock; U2.L4.1 (fish): Shutterstock; U2.L4.1 (hippo): Shutterstock; U2.L4.1 (crane): Shutterstock; U2.L4.1 (snake): JanRehschuh / Wikimedia Commons / Creative Commons Attribution-Share Alike 3.0 Unported, <http://creativecommons.org/licenses/by-sa/3.0/deed.en> / modified from original; U2.L4.2: Shutterstock; U2.L4.2 (inset): Alisa Haggard; U2.L4.3: Shutterstock; U2.L4.4: Shutterstock; U2.L4.4 (inset illustration): Alisa Haggard; U2.L4.5: Shutterstock; U2.L4.5 (inset illustration): Alisa Haggard; U2.L4.6: Shutterstock; U2.L4.6 (inset): Alisa Haggard; U2.L4.7: Shutterstock; U2.L4.7 (inset): Alisa Haggard; U2.L6.1 (background): Erika Baird; U2.L6.1 (smiling frog): Alisa Haggard; U2.L6.2 (left): Shutterstock; U2.L6.2 (right): Simini Blocker; U2.L6.3 (backgrounds): Shutterstock; U2.L6.3 (illustrations): Alisa Haggard; U2.L6.4: Shutterstock; U2.L6.5: Shutterstock; U2.L6.6: Shutterstock; U2.L10.1 (background): Erika Baird; U2.L10.1 (front left crane): Alisa Haggard; U2.L10.2: Simini Blocker; U2.L10.3: Simini Blocker; U2.L10.4 (background): Shutterstock; U2.L10.4 (Rattenborough): Alisa Haggard; U2.L10.5: Shutterstock; U2.L10.6 (background): Shutterstock; U2.L10.6 (top left crane): Alisa Haggard; U2.L10.7: Shutterstock; U2.L10.8: Shutterstock; U2.L10.9 (illustration): Alisa Haggard; U2.L10.9 (photographs): Shutterstock; U2.L10.10 (illustration): Alisa Haggard; U2.L10.10 (photographs): Shutterstock; U2.L10.11: Simini Blocker; U2.L10.12: Shutterstock; U2.L10.13: Shutterstock; U2.L12.1 (background): Erika Baird; U2.L12.1 (front-facing hippo): Alisa Haggard; U2.L12.2: Shutterstock; U2.L12.3 (background): Shutterstock; U2.L12.3 (Rattenborough): Alisa Haggard; U2.L12.4: Shutterstock; U2.L12.5: Shutterstock; U2.L12.6: Shutterstock; U2.L12.7: Shutterstock; U2.L12.8: Shutterstock; U2.L12.9: Shutterstock; U2.L12.10: Shutterstock; U2.L12.11: Shutterstock

Regarding the Shutterstock items listed above, please note: “No person or entity shall falsely represent, expressly or by way of reasonable implication, that the content herein was created by that person or entity, or any person other than the copyright holder(s) of that content.”