

1

Kindergarten

Skills 1 | Digital Components

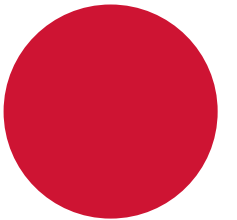
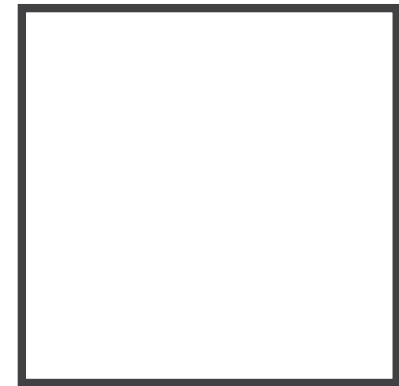
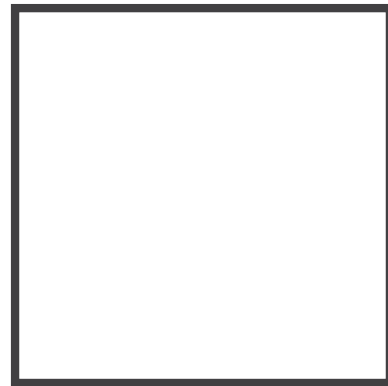
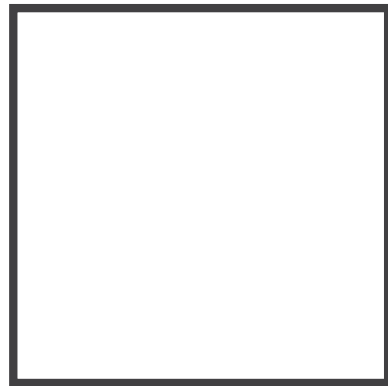
Kindergarten

Skills 1

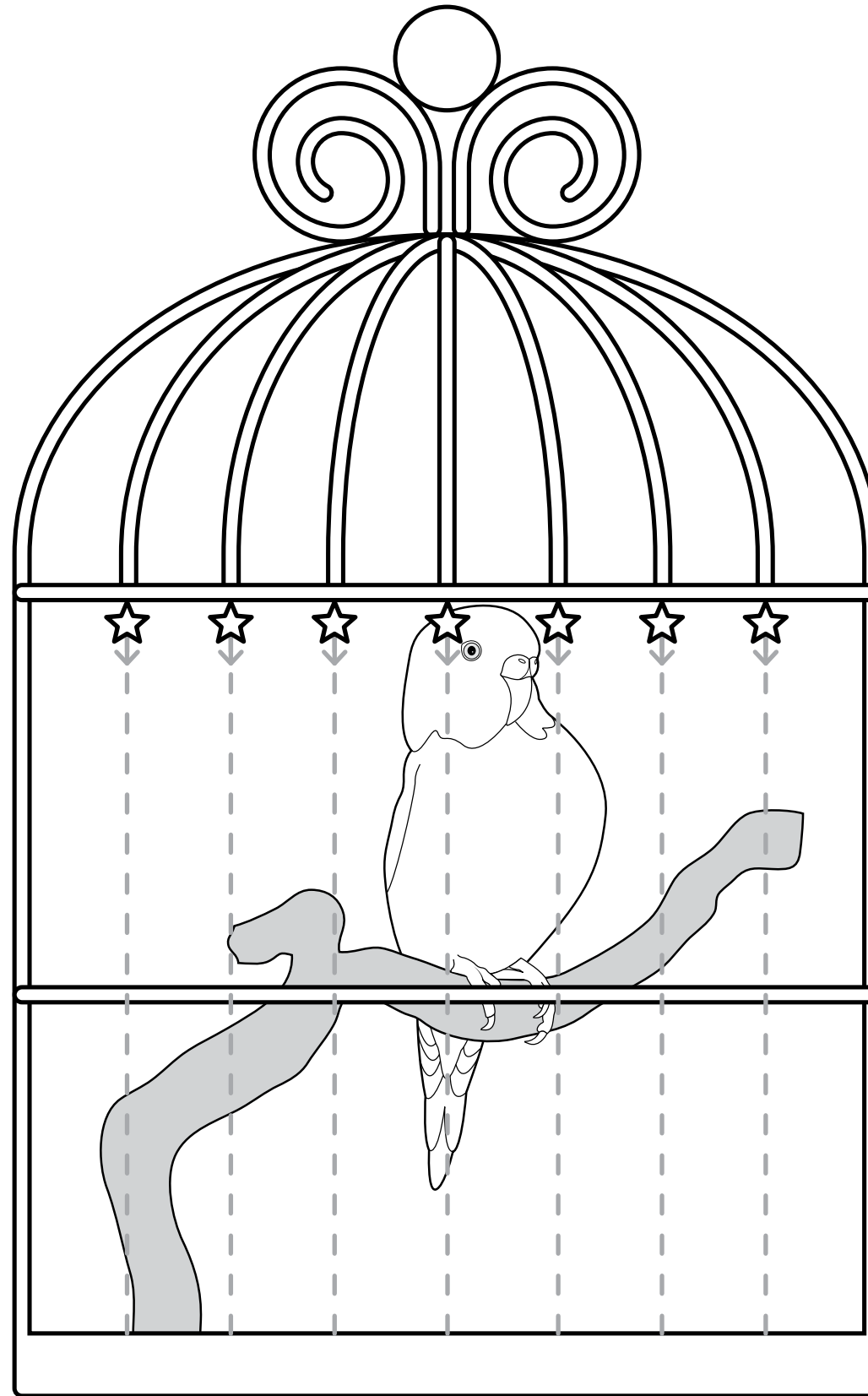
Digital Components

Table of Contents

Digital Component 3.1	1
Digital Component 3.2	2
Digital Component 4.1	3
Digital Component 6.1	4
Digital Component 7.1.	5
Digital Component 8.1	6
Digital Component 9.1	7
Digital Component 9.2	8



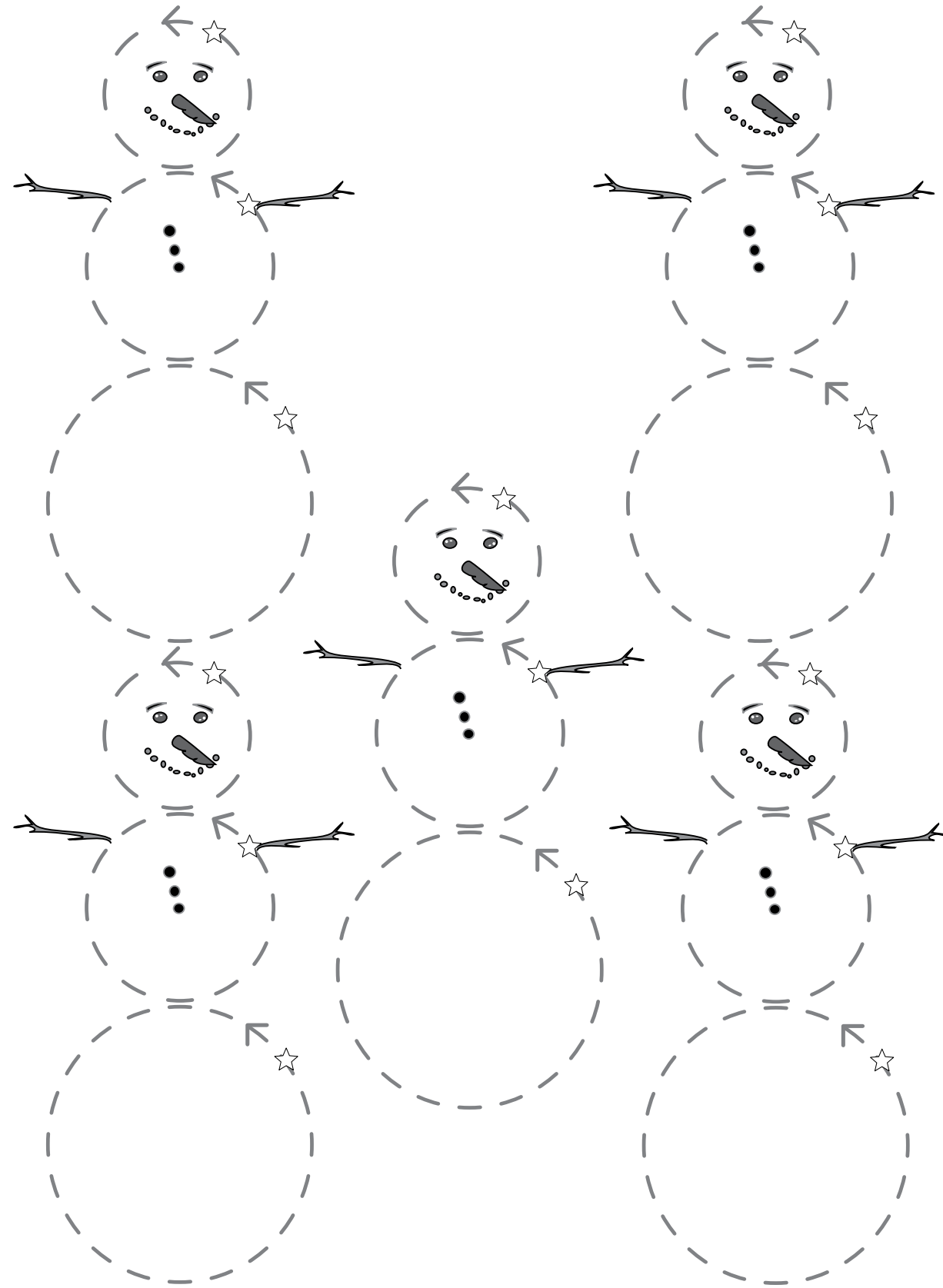
Directions: Have students trace the dotted vertical lines, starting at the stars and moving down. (There are more on the back.) Students may color the picture (optional).



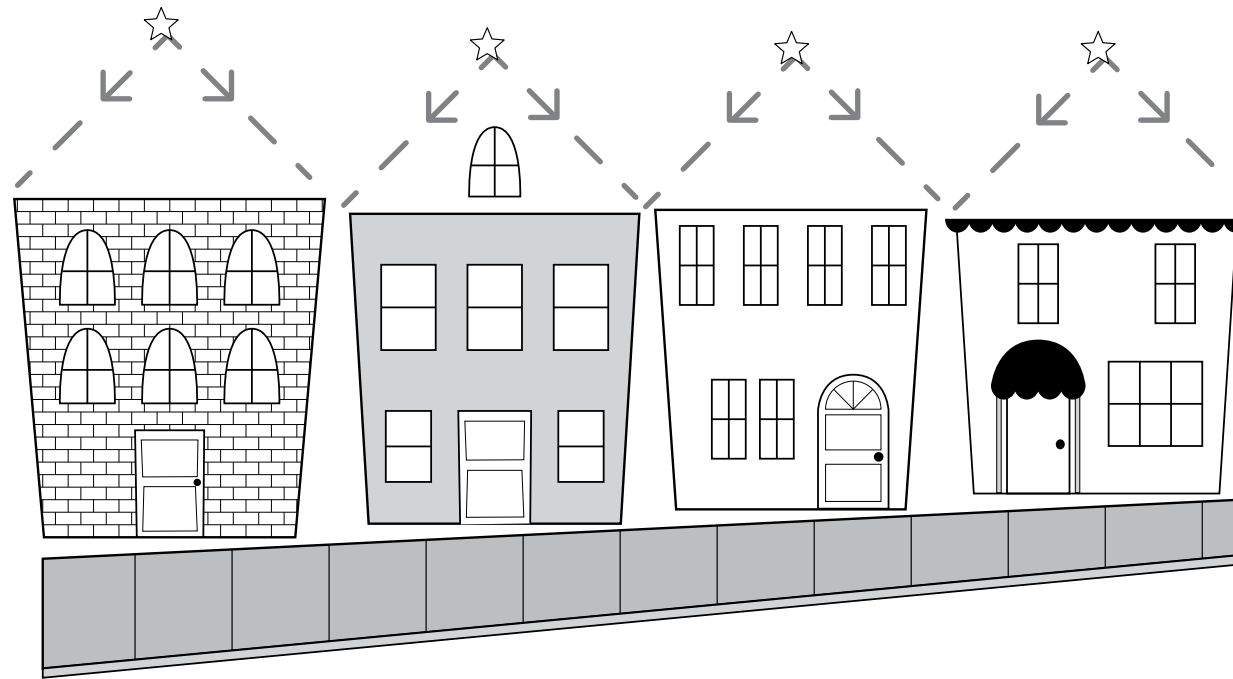
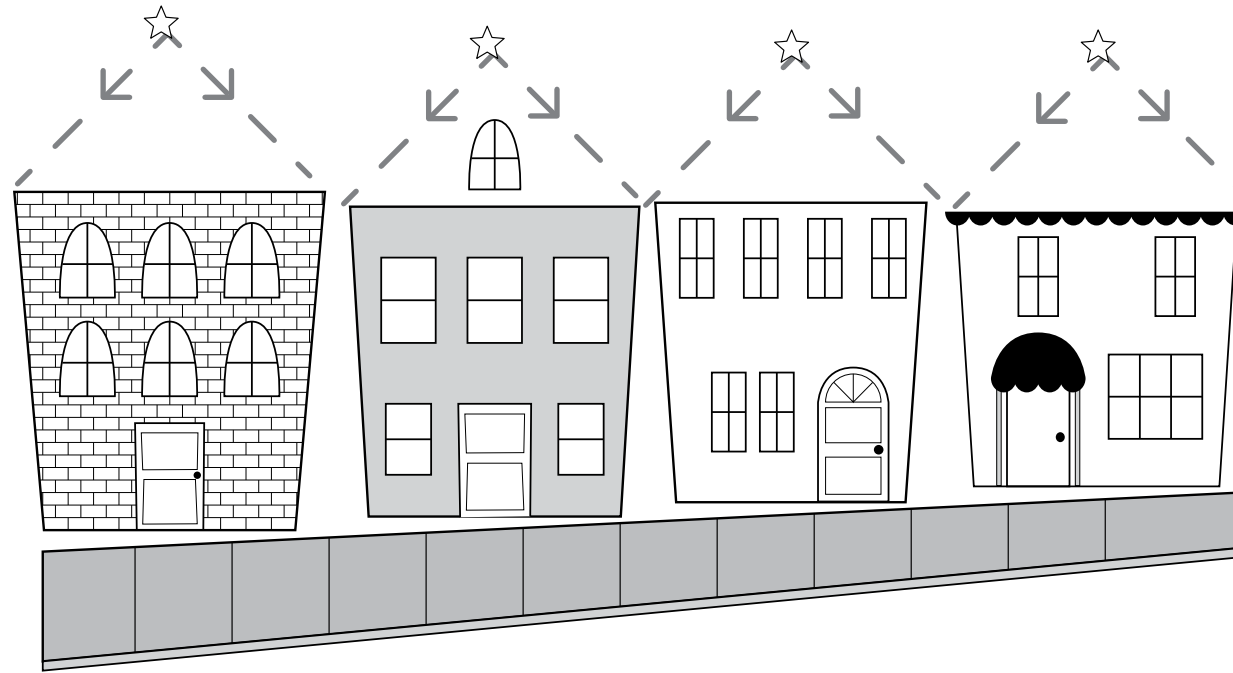
Directions: Have students trace the dotted horizontal lines, starting at the stars and moving to the right. (There are more on the back.) Students may color the pictures (optional).



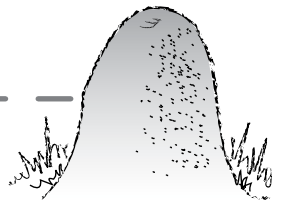
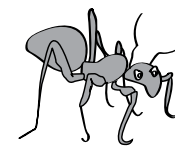
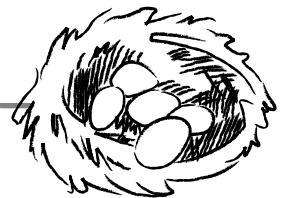
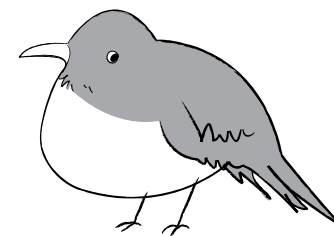
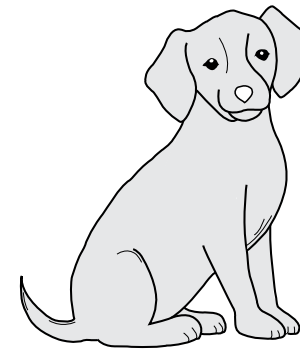
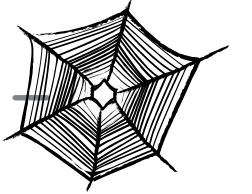
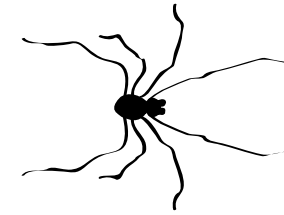
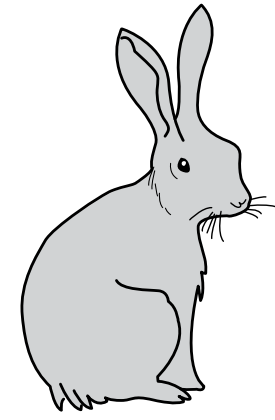
Directions: Ask students to trace the dotted circles, starting at the stars and moving to the left. Students may color the pictures (optional).



Directions: Ask students to trace the dotted lines, starting at the stars. Students may color the pictures (optional).

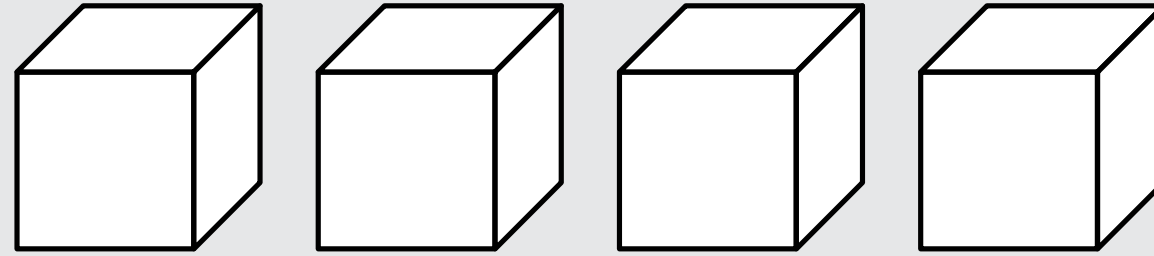


Directions: Ask students to trace the dotted lines, starting at the stars and moving down on the front of the activity page and moving to the right on the back of the activity page. Students may color the pictures (optional).

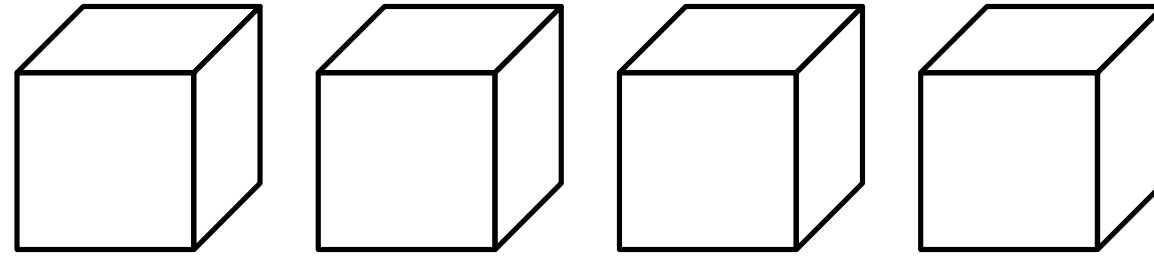


Directions: For each sentence, ask students to circle one cube for each word in the sentence read aloud.

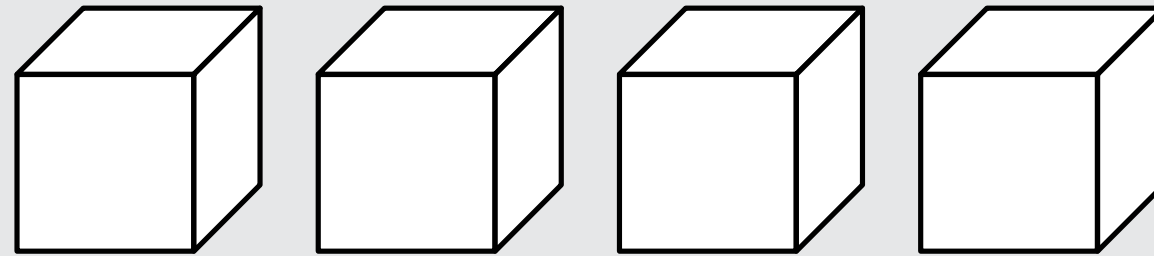
1.



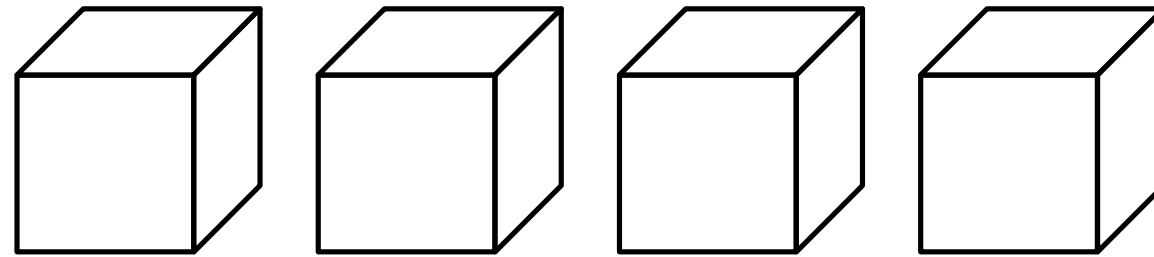
2.



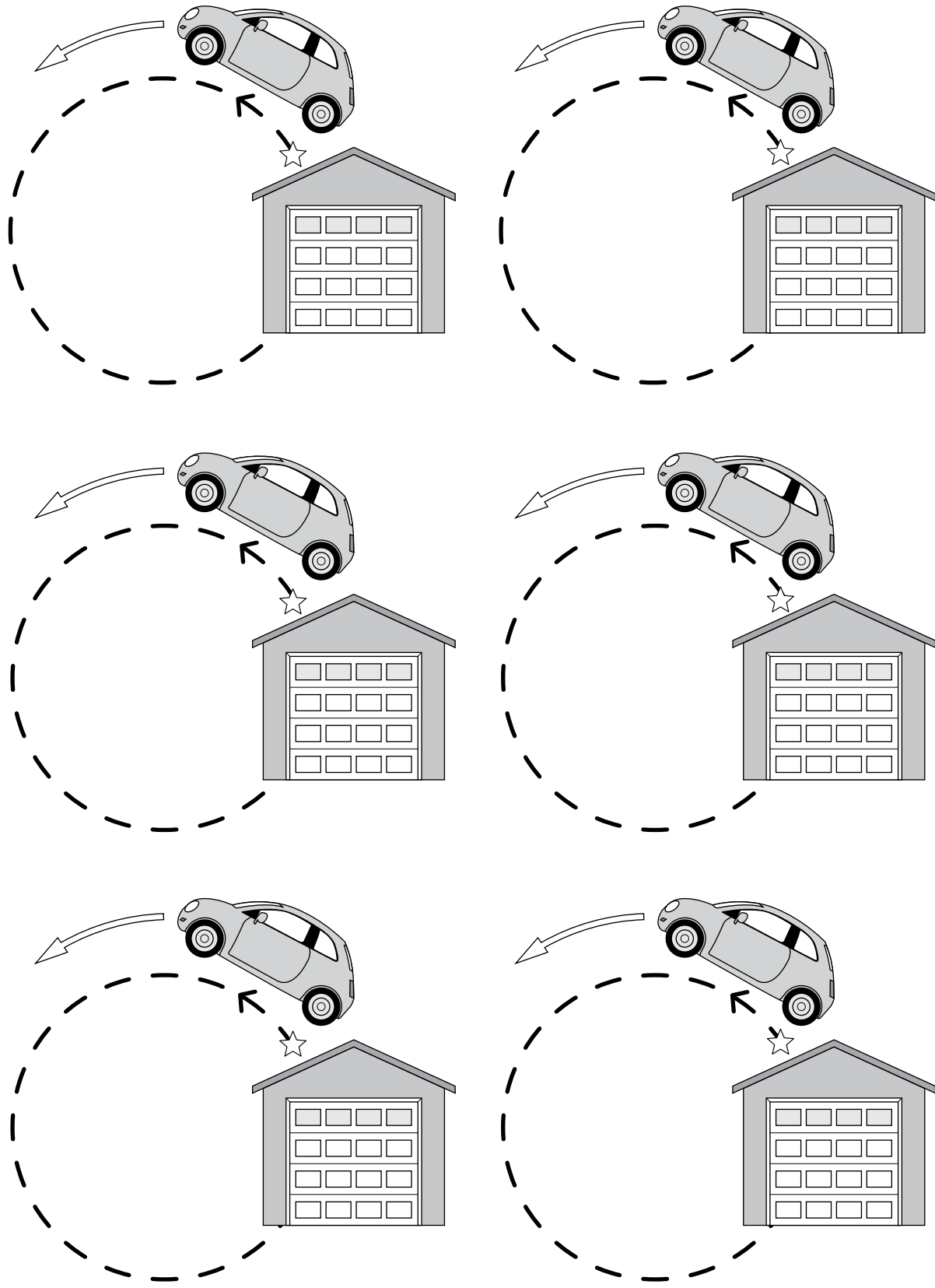
3.



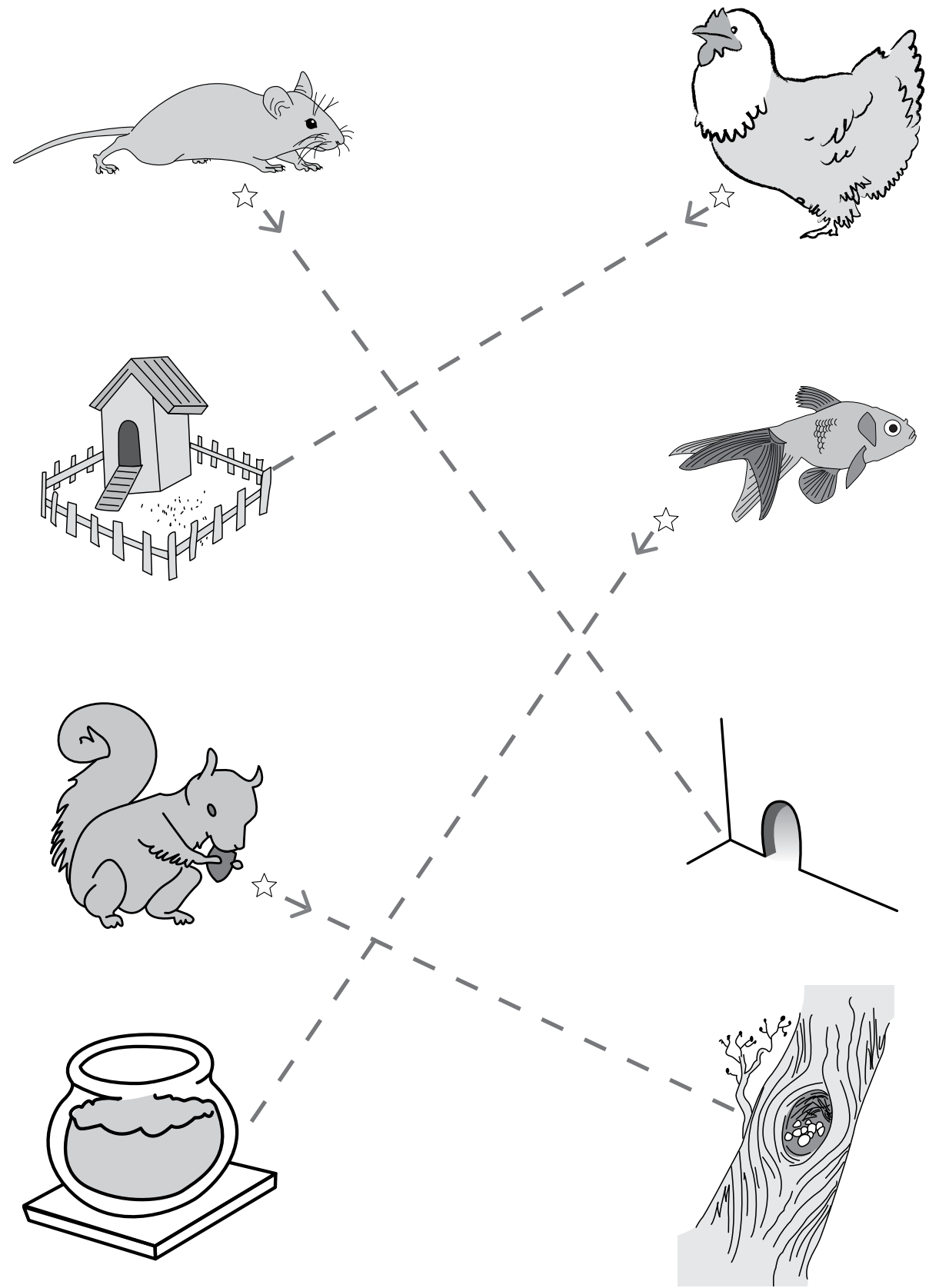
4.



Directions: Ask students to trace the dotted circles, starting at the stars and moving to the left. Students may color the pictures (optional).



Directions: Ask students to trace the dotted lines, starting at the stars. Students may color the pictures (optional).



Notice and Disclaimer: The agency has developed these learning resources as a contingency option for school districts. These are optional resources intended to assist in the delivery of instructional materials in this time of public health crisis. Feedback will be gathered from educators and organizations across the state and will inform the continuous improvement of subsequent units and editions. School districts and charter schools retain the responsibility to educate their students and should consult with their legal counsel regarding compliance with applicable legal and constitutional requirements and prohibitions.

Given the timeline for development, errors are to be expected. If you find an error, please email us at texashomelearning@tea.texas.gov.

This work is licensed under a Creative Commons Attribution-NonCommercial-ShareAlike 4.0 International License.

You are free: to Share—to copy, distribute, and transmit the work to Remix—to adapt the work

Under the following conditions:

Attribution—You must attribute any adaptations of the work in the following manner:

This work is based on original works of Amplify Education, Inc. (amplify.com) and the Core Knowledge Foundation (coreknowledge.org) made available under a Creative Commons Attribution-NonCommercial-ShareAlike 4.0 International License. This does not in any way imply endorsement by those authors of this work.

Noncommercial—You may not use this work for commercial purposes.

Share Alike—If you alter, transform, or build upon this work, you may distribute the resulting work only under the same or similar license to this one.

With the understanding that:

For any reuse or distribution, you must make clear to others the license terms of this work. The best way to do this is with a link to this web page:

<https://creativecommons.org/licenses/by-nc-sa/4.0/>

© 2020 Amplify Education, Inc. amplify.com

Trademarks and trade names are shown in this book strictly for illustrative and educational purposes and are the property of their respective owners. References herein should not be regarded as affecting the validity of said trademarks and trade names.

General Manager K-8 Humanities and SVP, Product
Alexandra Clarke

Vice President, Elementary Literacy Instruction
Susan Lambert

Content and Editorial
Elizabeth Wade, PhD, Director, Elementary Language Arts Content
Patricia Erno, Associate Director, Elementary ELA Instruction
Maria Martinez, Associate Director, Spanish Language Arts
Baria Jennings, EdD, Senior Content Developer
Christina Cox, Managing Editor

Product and Project Management
Ayala Falk, Director, Business and Product Strategy, K-8 Language Arts
Amber McWilliams, Senior Product Manager
Elisabeth Hartman, Associate Product Manager
Catherine Alexander, Senior Project Manager, Spanish Language Arts
LaShon Ormond, SVP, Strategic Initiatives
Leslie Johnson, Associate Director, K-8 Language Arts
Thea Aguiar, Director of Strategic Projects, K-5 Language Arts
Zara Chaudhury, Project Manager, K-8 Language Arts

Design and Production
Tory Novikova, Product Design Director
Erin O'Donnell, Product Design Manager

Other Contributors
Patricia Beam, Bill Cheng, Ken Harney, Molly Hensley, David Herubin, Sara Hunt, Kristen Kirchner, James Mendez-Hodes, Christopher Miller, Diana Projansky, Todd Rawson, Jennifer Skelley, Julia Sverchuk, Elizabeth Thiers, Amanda Tolentino, Paige Womack

Series Editor-in-Chief
E. D. Hirsch Jr.

President
Linda Bevilacqua

Editorial Staff
Mick Anderson
Robin Blackshire
Laura Drummond
Emma Earnst
Lucinda Ewing
Sara Hunt
Rosie McCormick
Cynthia Peng
Liz Pettit
Tonya Ronayne
Deborah Samley
Kate Stephenson
Elizabeth Wafler
James Walsh
Sarah Zelinke

Acknowledgments
These materials are the result of the work, advice, and encouragement of numerous individuals over many years. Some of those singled out here already know the depth of our gratitude; others may be surprised to find themselves thanked publicly for help they gave quietly and generously for the sake of the enterprise alone. To helpers named and unnamed we are deeply grateful.

Contributors to Earlier Versions of These Materials
Susan B. Albaugh, Kazuko Ashizawa, Kim Berrall, Ang Blanchette, Nancy Braier, Maggie Buchanan, Paula Coyner, Kathryn M. Cummings, Michelle De Groot, Michael Donegan, Diana Espinal, Mary E. Forbes, Michael L. Ford, Sue Fulton, Carolyn Gosse, Dorrit Green, Liza Greene, Ted Hirsch, Danielle Knecht, James K. Lee, Matt Leech, Diane Henry Leipzig, Robin Luecke, Martha G. Mack, Liana Mahoney, Isabel McLean, Steve Morrison, Juliane K. Munson, Elizabeth B. Rasmussen, Ellen Sadler, Rachael L. Shaw, Sivan B. Sherman, Diane Auger Smith, Laura Tortorelli, Khara Turnbull, Miriam E. Vidaver, Michelle L. Warner, Catherine S. Whittington, Jeannette A. Williams.

We would like to extend special recognition to Program Directors Matthew Davis and Souzanne Wright, who were instrumental in the early development of this program.

Schools
We are truly grateful to the teachers, students, and administrators of the following schools for their willingness to field-test these materials and for their invaluable advice: Capitol View Elementary, Challenge Foundation Academy (IN), Community Academy Public Charter School, Lake Lure Classical Academy, Lepanto Elementary School, New Holland Core Knowledge Academy, Paramount School of Excellence, Pioneer Challenge Foundation Academy, PS 26R (the Carteret School), PS 30X (Wilton School), PS 50X (Clara Barton School), PS 96Q, PS 102X (Joseph O. Loretan), PS 104Q (the Bays Water), PS 214K (Michael Friedsam), PS 223Q (Lyndon B. Johnson School), PS 308K (Clara Cardwell), PS 333Q (Goldie Maple Academy), Sequoyah Elementary School, South Shore Charter Public School, Spartanburg Charter School, Steed Elementary School, Thomas Jefferson Classical Academy, Three Oaks Elementary, West Manor Elementary.

And a special thanks to the Pilot Coordinators, Anita Henderson, Yasmin Lugo-Hernandez, and Susan Smith, whose suggestions and day-to-day support to teachers using these materials in their classrooms were critical.

Texas Contributors
Content and Editorial
Sarah Cloos
Laia Cortes
Jayana Desai
Angela Donnelly
Claire Dorfman
Ana Mercedes Falcón
Rebecca Figueroa
Nick García
Sandra de Gennaro
Patricia Infanzón-Rodríguez
Seamus Kirst
Michelle Koral
Sean McBride
Jacqueline Ovalle
Sofía Pereson
Lilia Perez
Sheri Pineault
Megan Reasor
Marisol Rodríguez
Jessica Roodvoets
Lyna Ward

Product and Project Management
Stephanie Koleda
Tamara Morris

Art, Design, and Production
Nanyamka Anderson
Raghav Arumugan
Dani Aviles
Olioli Buika
Sherry Choi
Stuart Dalgo
Edel Ferri
Pedro Ferreira
Nicole Galuszka
Parker-Nia Gordon
Isabel Hetrick
Ian Horst
Ashna Kapadia
Jagriti Khirwar
Julie Kim
Lisa McGarry
Emily Mendoza
Marguerite Oerlemans
Lucas De Oliveira
Tara Pajouhesh
Jackie Pierson
Dominique Ramsey
Darby Raymond-Overstreet
Max Reinhardsen
Mia Saine
Nicole Stahl
Flore Thevoux
Jeanne Thornton
Amy Xu
Jules Zuckerberg

Design and Graphics Staff
Kelsie Harman
Liz Loewenstein
Bridget Moriarty
Lauren Pack

Consulting Project Management Services
ScribeConcepts.com

Additional Consulting Services
Erin Kist
Carolyn Pinkerton
Scott Ritchie
Kelina Summers

Credits
Every effort has been taken to trace and acknowledge copyrights. The editors tender their apologies for any accidental infringement where copyright has proved untraceable. They would be pleased to insert the appropriate acknowledgment in any subsequent edition of this publication. Trademarks and trade names are shown in this publication for illustrative purposes only and are the property of their respective owners. The references to trademarks and trade names given herein do not affect their validity.

All photographs are used under license from Shutterstock, Inc. unless otherwise noted.

Illustrators and Image Sources
2: Staff; 3: Staff; 4: Staff; 5: Staff; 6: Staff; 8: Staff

Regarding the Shutterstock items listed above, please note: "No person or entity shall falsely represent, expressly or by way of reasonable implication, that the content herein was created by that person or entity, or any person other than the copyright holder(s) of that content."

